



PA/DE

AMERICAN SOCIETY OF LANDSCAPE ARCHITECTS

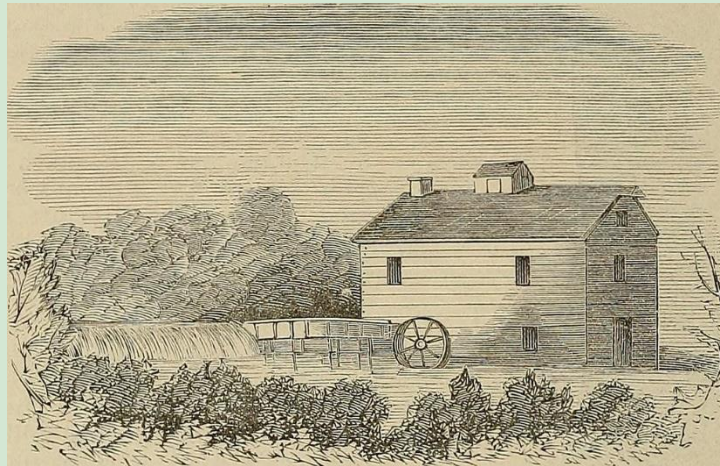
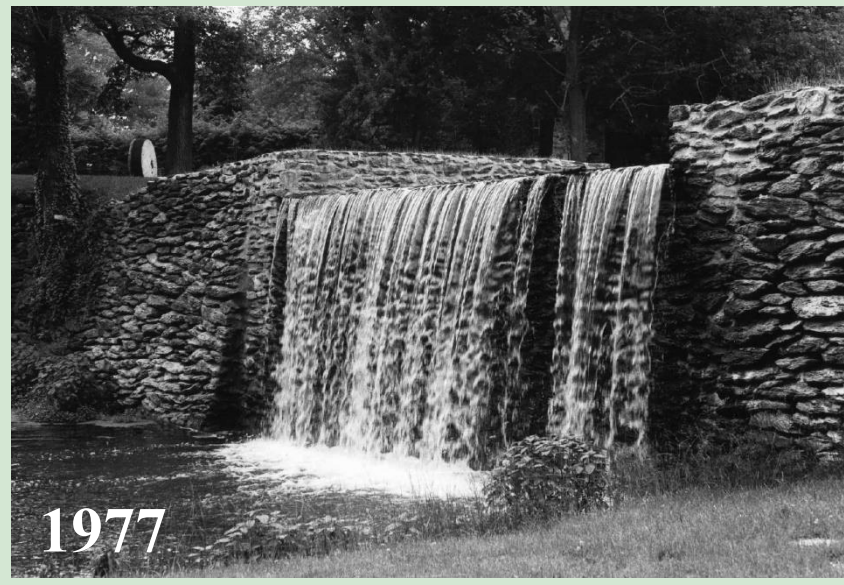
PA/DE ASLA AWARDS

2023 Professional Design Awards Program

GENERAL DESIGN CATEGORY

Hershey's Mill Park
Dam Removal & Stream Restoration





A Mill has existed at the site since 1796 and the dam and waterfall were iconic cultural landscape features. The pond was used for recreation and the dam as a backdrop for many family photographs by area residents.



RESERVOIR AT NORMAL OPERATING DEPTH



RESERVOIR DRAINED TO DRAWDOWN PERMIT DEPTH

After dewatering of the impoundment in 2008, parts of the former pond became classified as wetlands, adding to the adaptive reuse challenges in converting the site into a passive park.

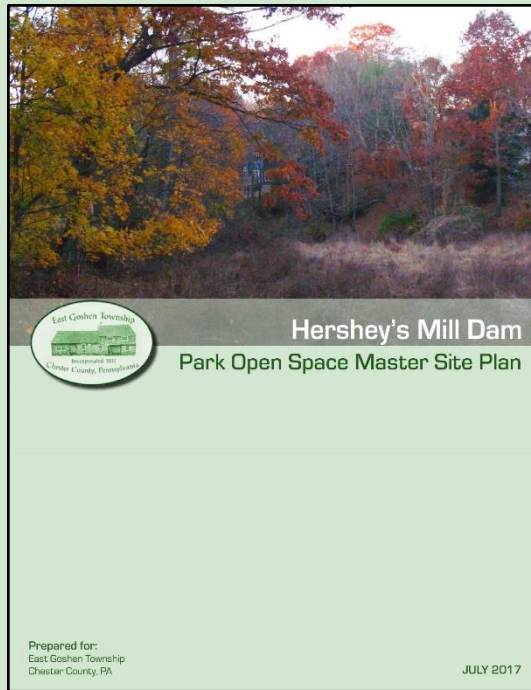


Several years after dewatering, the site filled with invasive and non-native plant species with limited habitat value. There was a several foot thick layer of legacy silt over most of the 6.4-acre site.

Hershey's Mill Park

Funding for Hershey's Mill Park was provided by:
 Pennsylvania Department of Community and Economic Development – Greenways, Recreation and Trails Program (GTRP); Pennsylvania Department of Conservation and Natural Resources;
 Pennsylvania Department of Environmental Protection - Growing Greener Plus Grants Program

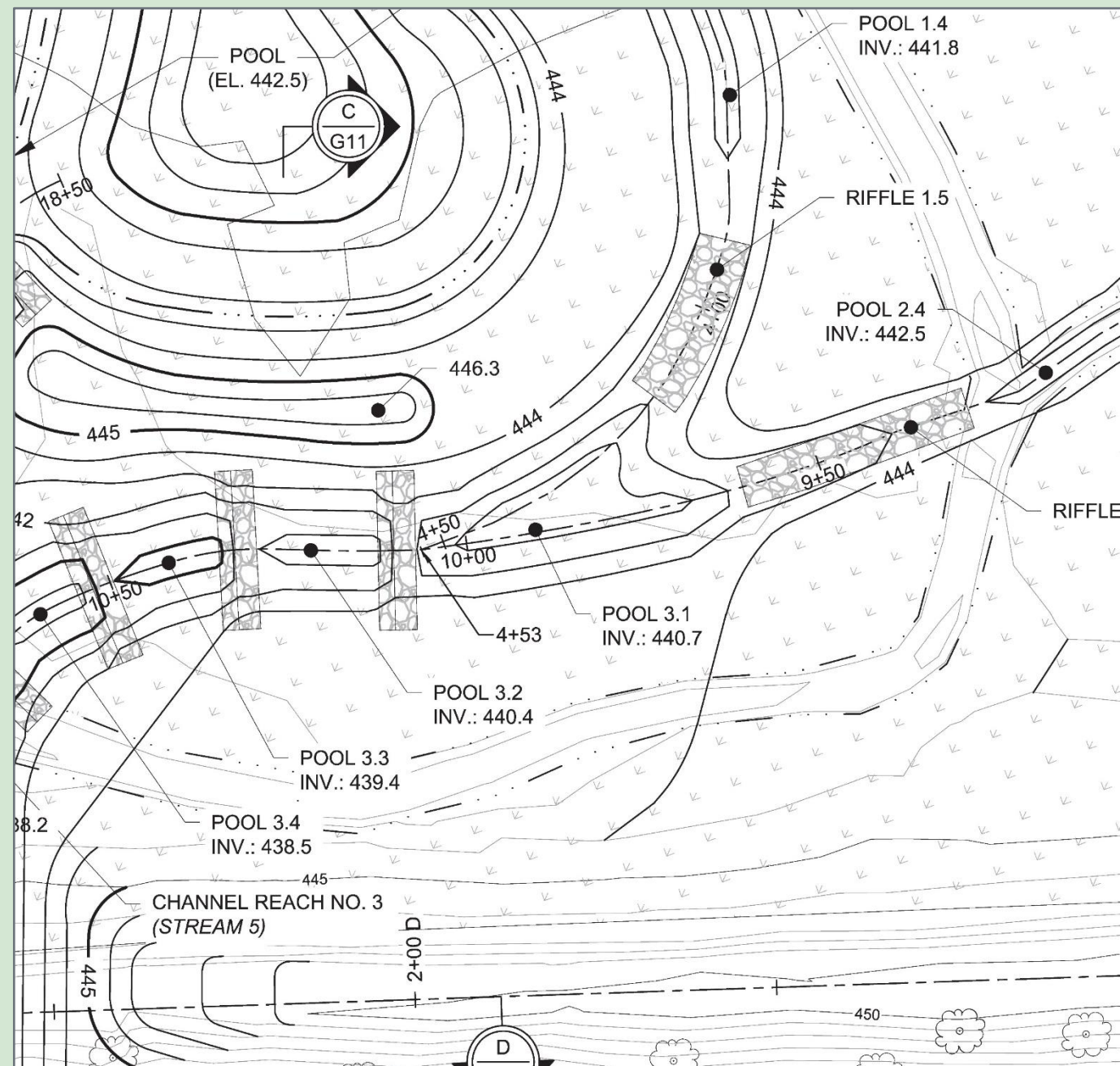
Plan & Process



The master plan design by the landscape architect that was the basis for construction documents by the landscape architect / engineer team. This is also one of the interpretive signs installed in the park.



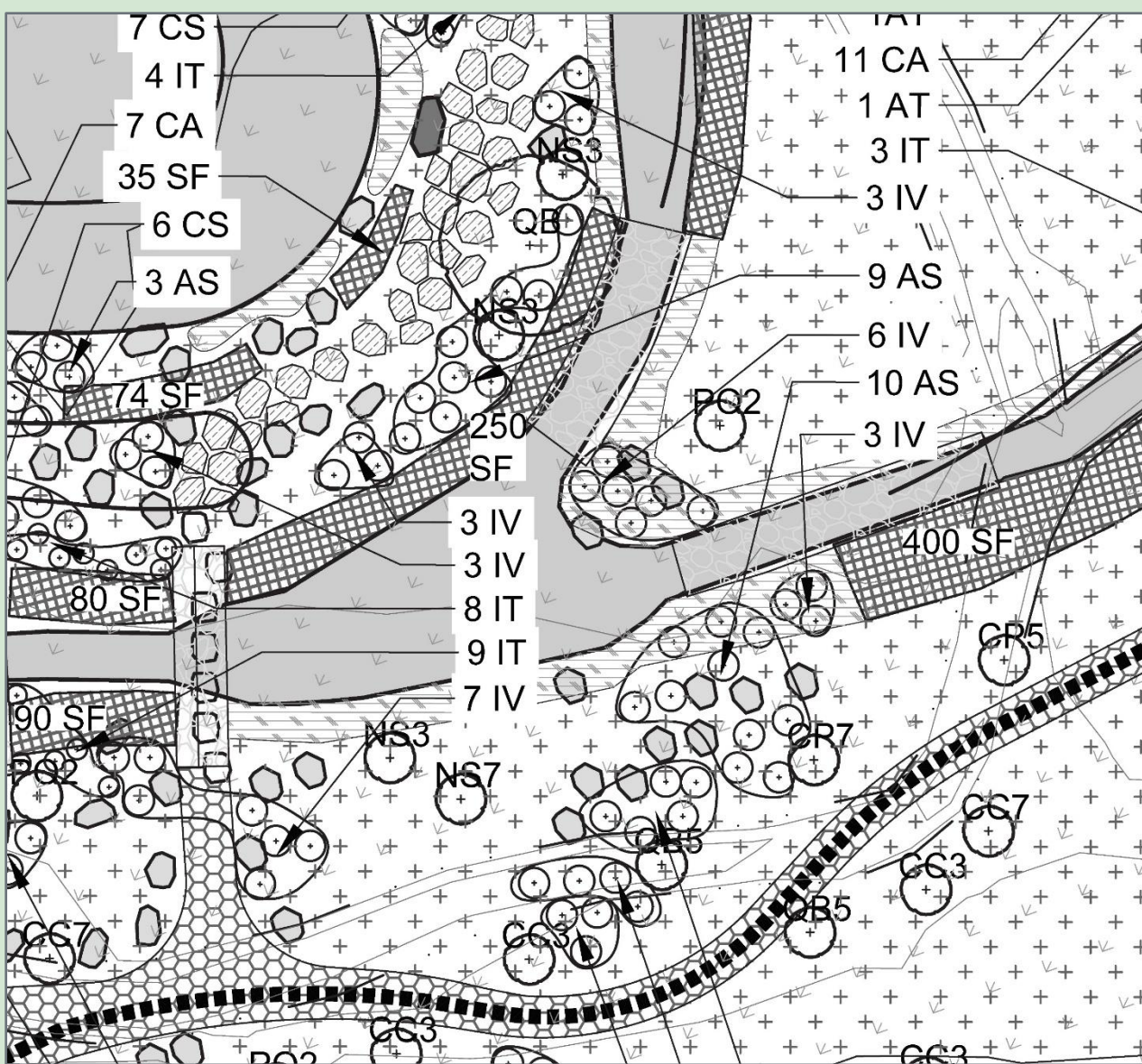
In order to lower the creek to the bottom elevation of the former dam in a sustainable manner, a series of step pools were created along the two reaches of the creek. This also allowed the construction of the pond to be accomplished cost-effectively since this required that legacy sediments be retained on site.





2021

Drone photograph of the park under construction with dam wall remnant at upper left. Pond in center with forebay to the right. A weir below the forebay spins water into the pond in controlled manner from the primary stream reach in the lower right.



Red Maple *Acer rubrum*



Smooth Alder *Alnus serrulata*



Swamp Milkweed
Asclepias incarnata



Blue flag *Iris versicolor*

A closeup of the planting plan showing the confluence between reaches 1 and 2. 12 species of trees, 10 shrub species, 21 herbaceous species, 3 live stake species and several conservation seed mixes were planted. Summer 2022 photographs follow.



Pond, 2022



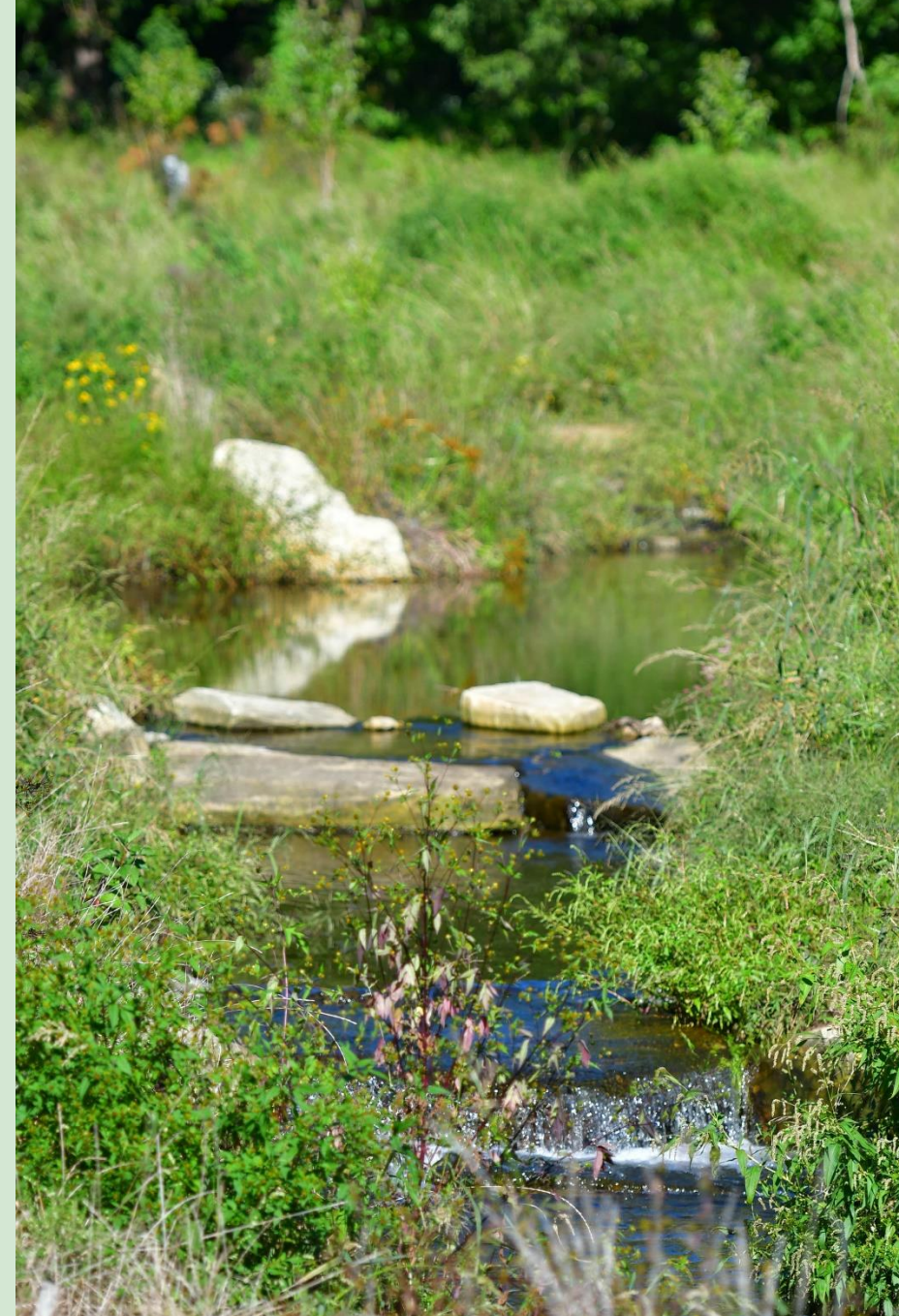
Weir, forebay, pond beyond, former mill - upper right



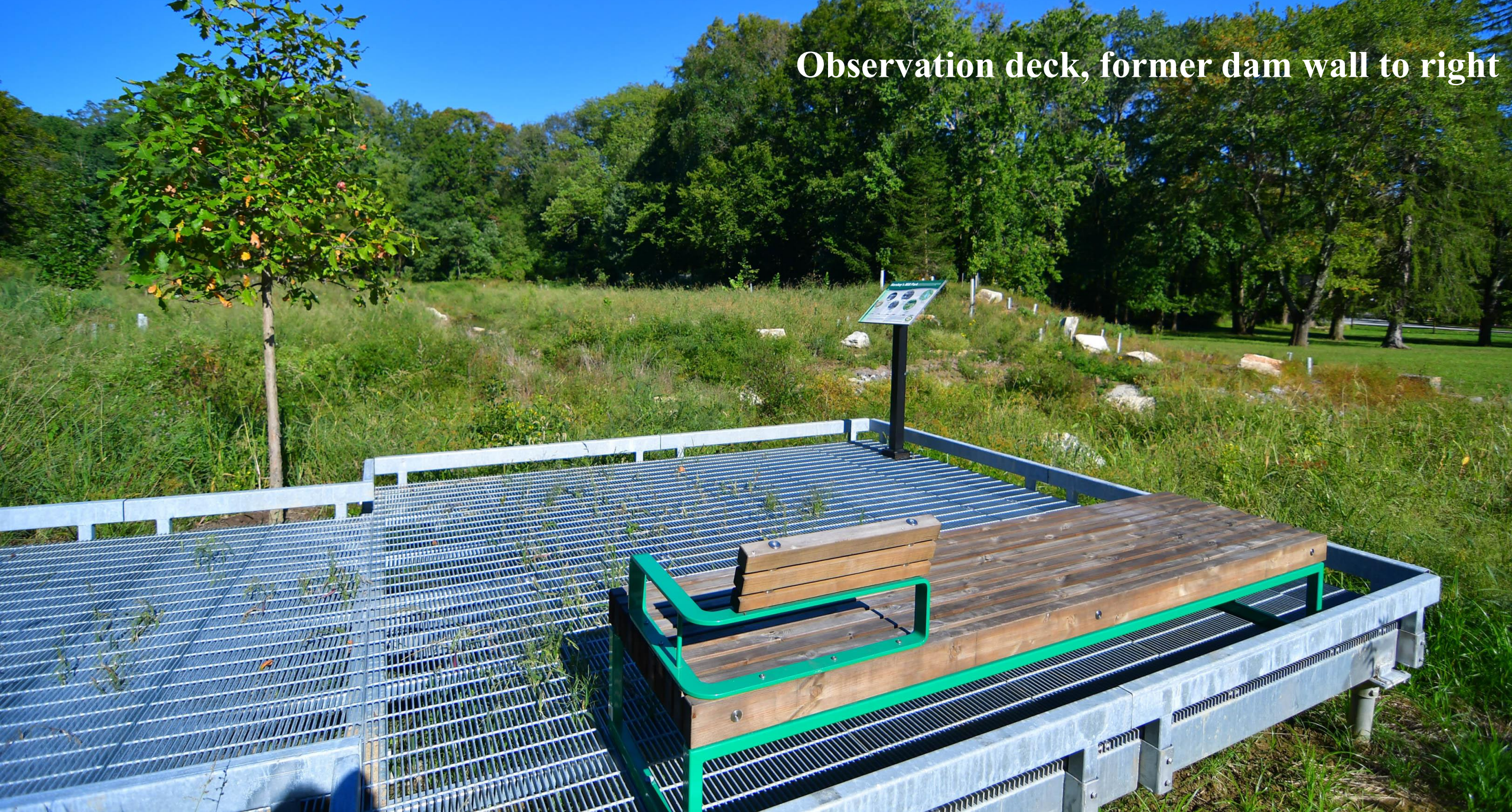
Chubs in creek, 2022



Visitors and step pools



Observation deck, former dam wall to right



Boardwalk will be masked by emerging vegetation



A scenic view of a boardwalk winding through a lush green landscape. The boardwalk is made of light-colored wood and has a simple railing. It curves through tall grasses and young trees. In the background, there are dense green trees under a bright sky. To the right, there is a wooden bench and a dark wooden signpost with a flat top.

Boardwalk winds its way past pond and wetlands

The text