



## WINCHESTER CLARK COUNTY, KY PARKS



RESTORED + ACTIVATED  
RIPARIAN BUFFERS - LYKINS PARK

COMMUNITY BEACH  
RESTORED WETLAND - KROGER PARK

RAIL TO TRAIL BIKING  
AND PEDESTRIAN NETWORK



“My park needs to be updated to 2021 The Next Generation!”

“More community activities.”

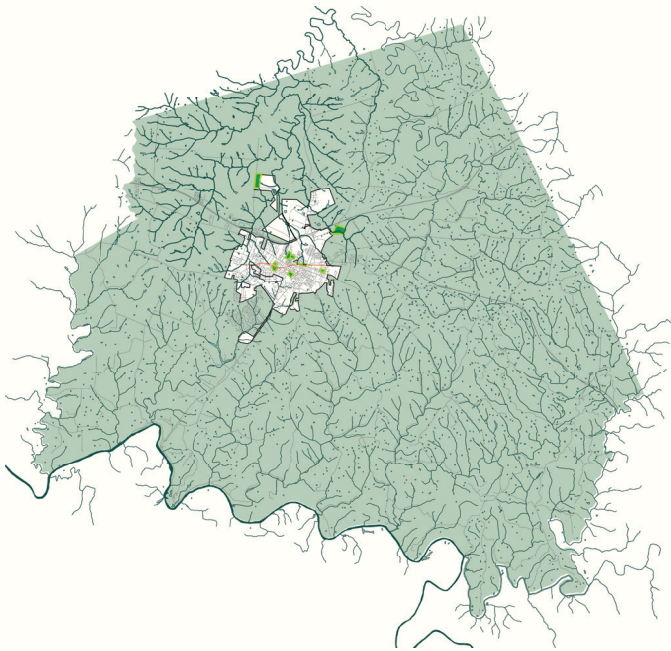
“We love the natural surrounding and the creek also.”

“Update for more diversity and attract other visitors.”

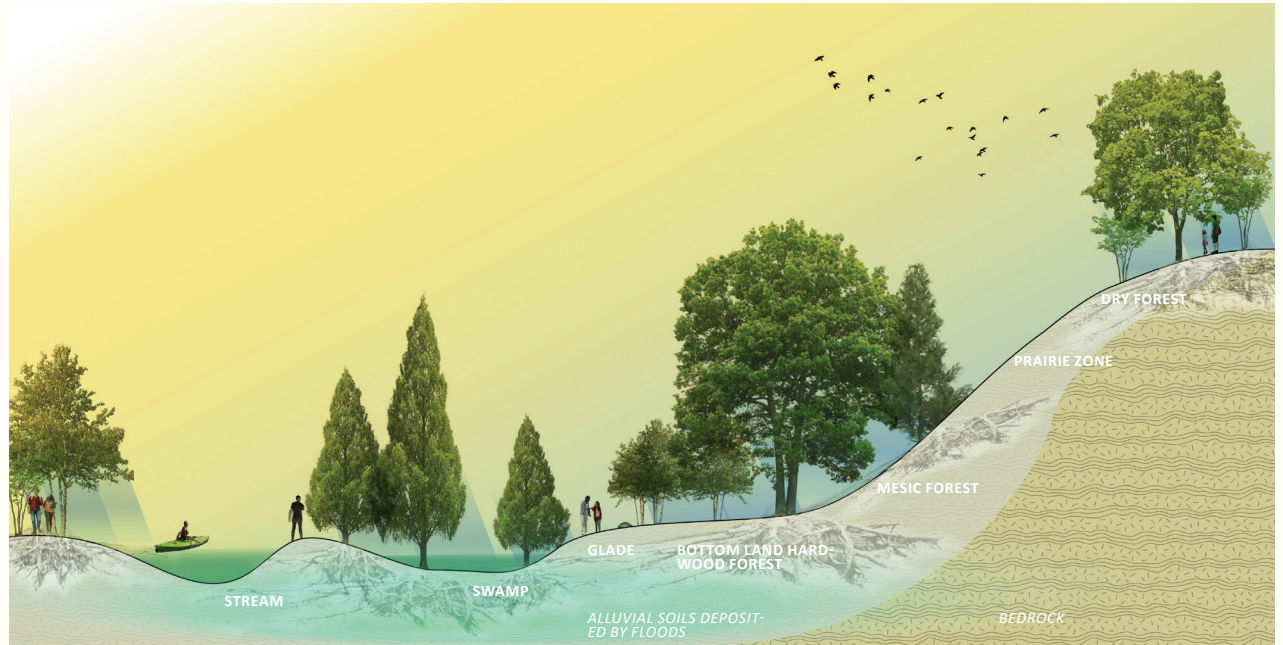
BLOOM Winchester is a county-wide park and open space master plan that celebrates diversity and is centered on the voices of the Winchester-Clark County community. It offers recommendations for ten parks in the Winchester-Clark-County Parks and Recreation system.



## REGIONAL CONTEXT



FORK LICKING RIVER WATERSHED



CONCEPTUAL SECTION OF THE "INTERIOR PLATEAU" ECO-REGION

### SOURCES:

ECOREGION: "PRIMARY DISTINGUISHING CHARACTERISTICS OF LEVEL III ECOREGIONS OF THE CONTINENTAL UNITED STATES," [HTTPS://HORT.PURDUE.EDU/NEWCROP/CROPMAP/ECOREG/DESCRIPT.HTML#71](https://hort.purdue.edu/newcrop/cropmap/ecoreg/descript.html#71)

CROSS SECTION REFERENCE: G. ABERNATHY, D. WHITE, E. LAUDERMILK, AND M. EVANS M, EDS., KENTUCKY'S NATURAL HERITAGE: AN ILLUSTRATED GUIDE TO BIODIVERSITY (LEXINGTON, KY: THE UNIVERSITY OF KENTUCKY PRESS, 2010).

Winchester's neighborhood parks are located near streams and waterways within the Fork Licking River watershed yet are disconnected as a system. The plan proposes a network of connected public spaces incorporating ecological assets, enhancing programming, and adapting to climatic changes.

# CULTURAL ECOLOGY TIMELINE

“Indigenous peoples have always lived on the land that is now called Kentucky, and continue to live here today. The place we now call Kentucky is primarily Shawnee, Cherokee, Chickasaw and Osage land.”

- Kentuckians for the Commonwealth (KFTC)



COMPANION PLANTING



EUROPEAN IMPORTED “KENTUCKY BLUEGRASS”

“The topography, soils, and climate in central Kentucky were not suitable for growing cotton, rice, or sugar cane. [But the climate was] well-suited to industrial hemp production. Harvesting and processing hemp was very hard, intensive work . . . hemp growers relied almost exclusively on enslaved labor.”

UNCOVERING THE LIVES OF KENTUCKY'S ENSLAVED PEOPLE. NOTABLE KENTUCKY AFRICAN AMERICANS DATABASE

EUROPEAN PLANTATION SYSTEM + ENSLAVED LABOR



ROAD BUILDING



MARCH ON FRANKFORT

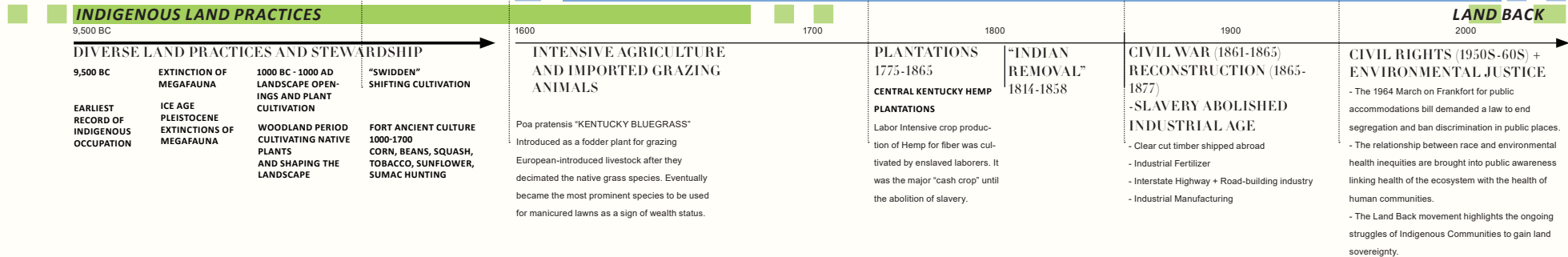


TIMBER MILLS



ECOLOGICAL AWARENESS

MAJOR INFLUENCES



Cultural and economic activities are linked to the ongoing ecological changes in the region; considering historical cultural and ecological context helped the team to understand current cultural land practices and thus envision more equitable futures.

# RE-WILDING STUDY

SHALLOW ROOTS OF TURF GRASS SERVE LITTLE ECOLOGICAL FUNCTION

DEEP ROOTS OF PERENNIAL PLANTS ENHANCE SOIL HEALTH, STORE CARBON, AND AID IN EROSION PREVENTION



# LAWN

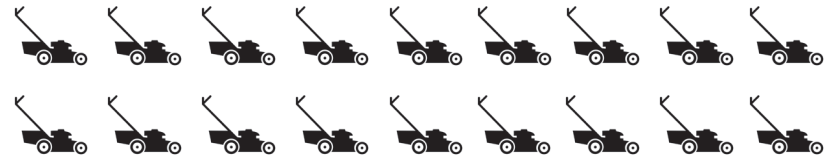
<b>ESTABLISHMENT COST / ACRE</b>	\$ 2,200 (SEEDLINGS) \$ 12,000 (SOD) \$ 15,200 (IRRIGATION SYSTEM)
<b>MAINTENANCE / ACRE / YEAR:</b>	\$ 1,500 (REGULAR MOWING, FERTILIZER, PESTICIDES) \$ 1,800 (WATER COSTS - ONLY IF IRRIGATED, WCCPR'S PARKS ARE NOT)

**MAINTENANCE / YEAR TOTAL: \$121,500 (FOR 81 ACRES)**

TIME TO MOW ALL LAWN IN PARKS: 81 HRS X 18 MOWINGS = 1,458

<b>WEEKLY MOWING:</b> \$17,570.07 / YEAR (GAS COST) 4,223.60 HRS / YEAR 6,335.36 GALLONS / YEAR	<b>BI-WEEKLY MOWING:</b> \$8,785.04 / YEAR (GAS COST) 2,111.80 HRS / YEAR 3,167.68 GALLONS / YEAR
--	--

ANNUAL MOWINGS PER ACRE: PRICING SOURCE: CONSERVATION DESIGN FORUM, INC. MAY 1995



# PRAIRIE

<b>ESTABLISHMENT COST / ACRE:</b>	\$ 1200-1500
<b>ESTABLISHMENT COST TOTAL:</b>	\$97,200-121,500
<b>MAINTENANCE / ACRE / YEAR:</b>	\$ 475 ANNUALLY (MOWING)

**MAINTENANCE / YEAR TOTAL: \$ 38, 475 (FOR 81 ACRES)**

TIME TO MOW ALL LAWN IN PARKS: 81 HRS X 2 MOWINGS = 162

<b>REQUIRES MOWING 2X TIMES A YEAR :</b> \$667 - \$1000 / YEAR (GAS COST) 162 - 243 HRS / YEAR 243 - 365 GALLONS / YEAR
--

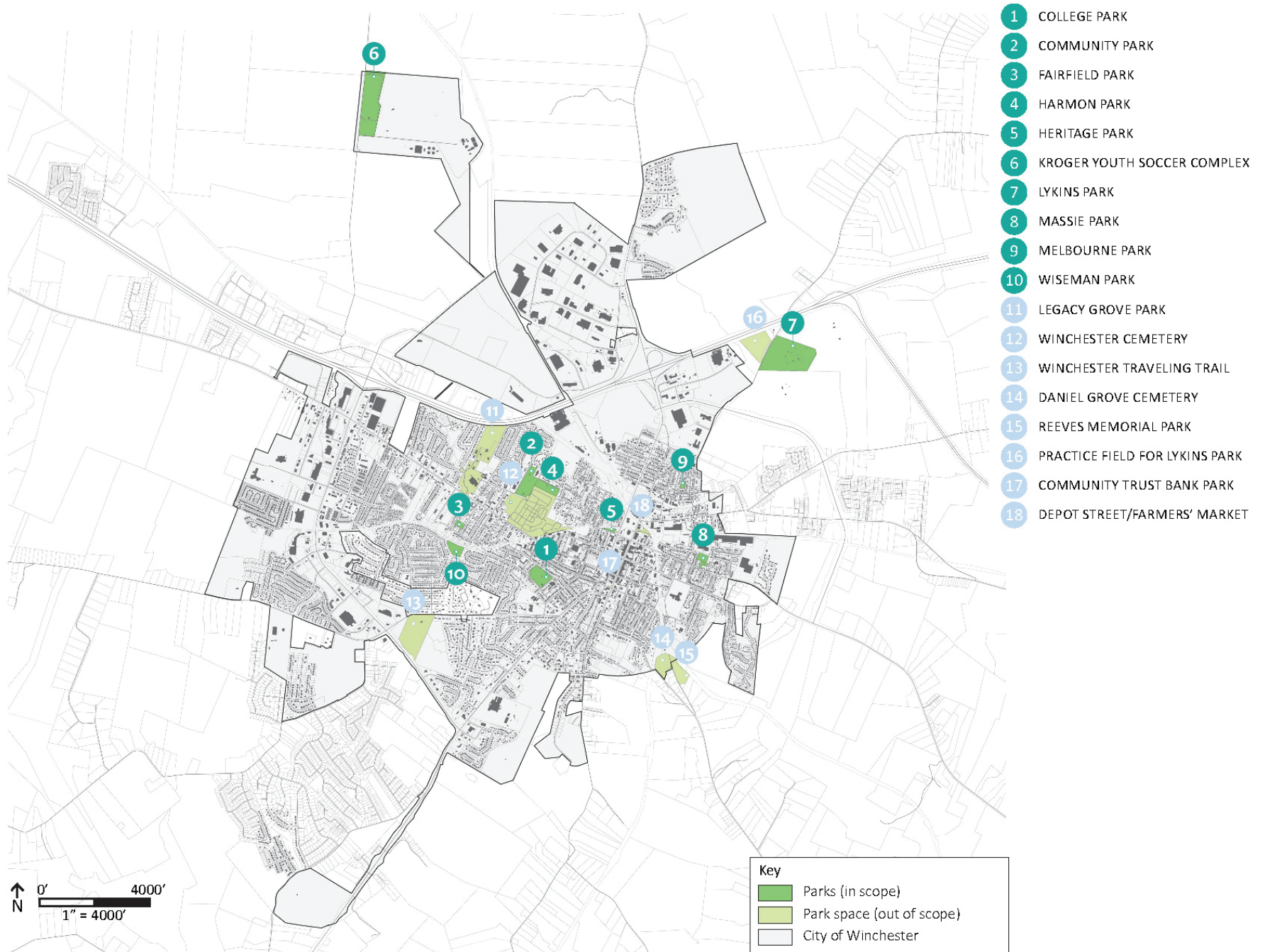
ANNUAL MOWINGS PER ACRE



Re-wilding demonstrates how parks can build habitat, increase resilience, reduce maintenance burdens, provide economic benefits, and improve aesthetics. Converting lawn to meadows saves \$83,025 annually across 81 acres of “re-wilded” parkland. Sustainable maintenance also helps parks prepare for climate change.

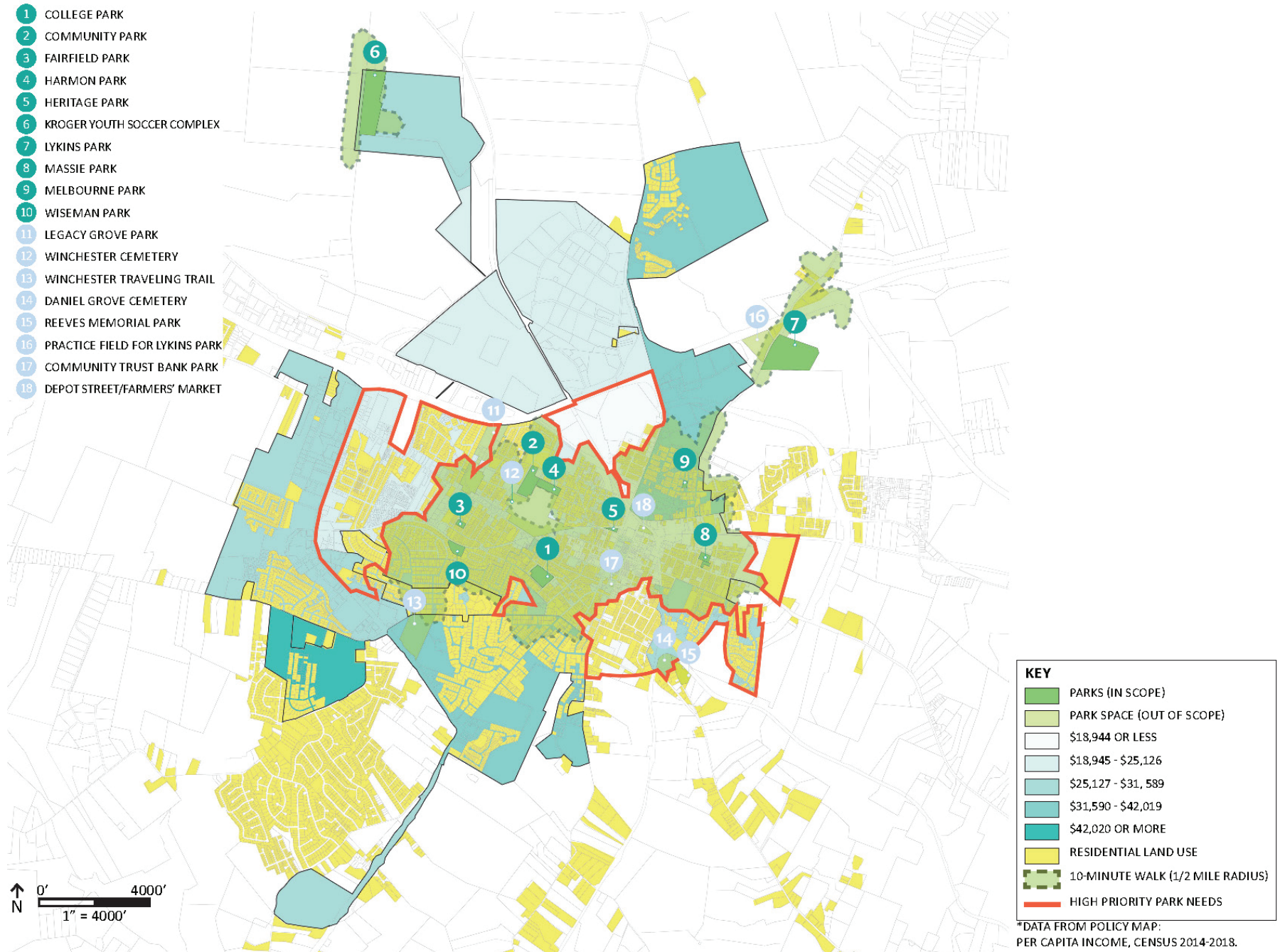


# PARKS & OPEN SPACES



The master plan studies ten parks that are owned and managed by WCCPR, as well as significant public spaces, trails, cemeteries, schools, and plazas in Winchester.

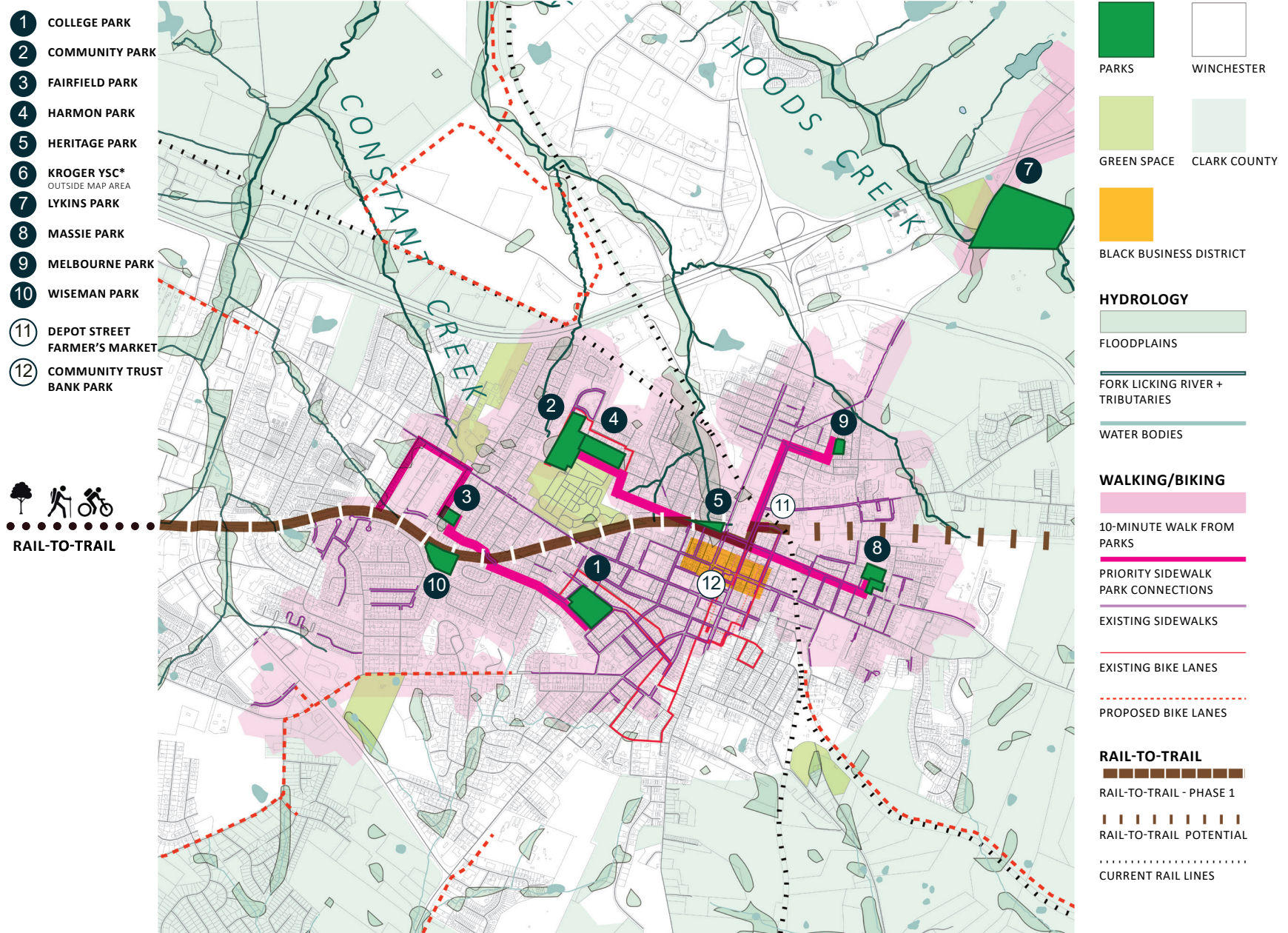
# EQUITABLE PARK DEVELOPMENT: PER CAPITA INCOME



ESRI data identified areas with per capita incomes at or below poverty level that would benefit from park development within a 10-minute walk. This information was layered with demographic data, and mapping informed recommendations for connectivity and equitable park funding.



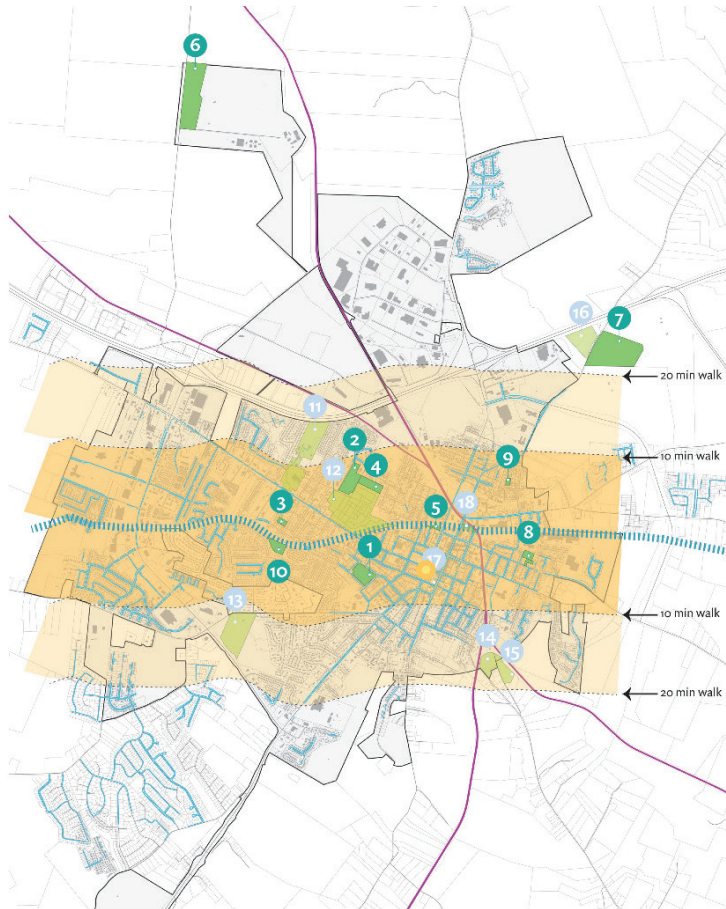
# CONNECTIVITY RECOMMENDATIONS



Priority connections between the parks highlighted in dark pink show the areas that could benefit from sidewalks and trail improvements to form accessible pedestrian connections



# CONNECTIVITY RECOMMENDATIONS



PROPOSED RAIL-TO-TRAIL ROUTE WITH 10 AND 20 MIN WALKING PROXIMITY.

KEY	
	PARKS (IN SCOPE)
	PARK SPACE (OUT OF SCOPE)
	CITY OF WINCHESTER
	SIDEWALKS
	ACTIVE RAILROAD
	OLD RAIL LINE
	SITE OF DEPOT STREET

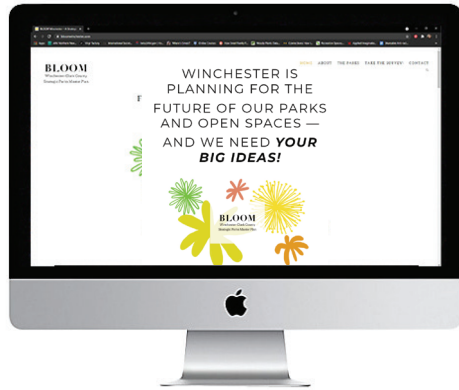


PROPOSED RAIL-TO-TRAIL ROUTE - BEFORE AND AFTER PERSPECTIVE RENDERING.

To enhance connectivity, the plan recommends improving sidewalks, trails, and parks and working with property owners to implement a rails-to-trails connector that links all parks and connects to Lexington.



# BLOOM WINCHESTER SURVEY WEBSITE



**BLOOM**  
Winchester-Clark County Strategic Parks Master Plan

WINCHESTER IS PLANNING FOR THE FUTURE OF OUR PARKS AND OPEN SPACES — AND WE NEED **YOUR BIG IDEAS!**

**TAKE THE SURVEY**

Take the Parks Survey and you can register for a **FREE ONE-DAY PASS** to the College Park Fitness Center!

**WHAT PARKS ARE INCLUDED?**

The parks plan includes 10 parks maintained and owned by Winchester Parks and Recreation (shown in teal), and also considers significant landscapes within Winchester such as the Traveling Trail and Legacy Grove (shown in light blue).

To learn more, visit the park pages below, or visit the [interactive map tour](#).

**WISEMAN PARK (HOLIDAY HILLS)**

**HERITAGE PARK**

**MELBOURNE PARK**

**HARMON PARK**

**MASSIE PARK**

**FAIRFIELD PARK**

**LYKINS PARK**

**COMMUNITY PARK**

**KROGER SOCCER COMPLEX**

**COLLEGE PARK**

BLOOMWinchester.com was designed by the planning team as a central hub for project information, surveys, and updates about the plan. It provided a place for the community to express ideas and desires for public space and contact the planning team.



## “POPSICLE AND PIZZA IN THE PARKS” PUBLIC ENGAGEMENT EVENTS



The planning team visited Winchester for a week-long immersion in July 2021 to experience the parks in person, meet with leadership and stakeholders, and host community events in each of the ten parks to gather valuable feedback from the community.



## OVERALL PARKS SURVEY: RESPONSES

DO YOU LIVE OR WORK IN WINCHESTER OR CLARK COUNTY?



DO YOU LIVE IN WALKING DISTANCE OF A PARK?



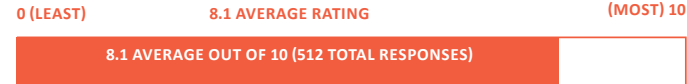
HOW DO YOU USUALLY GET TO PARKS IN WINCHESTER?



WOULD YOU SUPPORT A NEW WALKING TRAIL OR "RAILS-TO-TRAILS" PROJECT IN WINCHESTER?



HOW WELCOME AND RESPECTED DO YOU FEEL IN WINCHESTER'S PARKS?



HOW SAFE DO YOU FEEL IN WINCHESTER'S PARKS?



HOW EASY/DIFFICULT IS IT FOR YOU TO ACCESS AND USE WINCHESTER'S PARKS AND RECREATION FACILITIES?



## INDIVIDUAL PARKS SURVEY: HARMON PARK RESPONSES

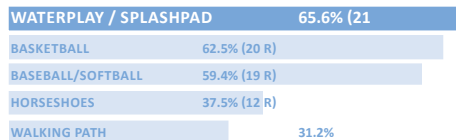
DO YOU LIVE WITHIN WALKING DISTANCE OF THE PARK?



HOW OFTEN DO YOU VISIT THE PARK?



WHAT SPORTS/RECREATION WOULD YOU LIKE? (TOP 5)



HOW WELCOME + RESPECTED DO YOU FEEL IN THE PARK?



HOW SAFE DO YOU FEEL IN THE PARK?



HOW EASY IS IT TO ACCESS + USE THE PARK?



The BLOOM Parks Survey was a critical component of the engagement process to learn of park users' impressions and experiences. It included overall information as well as surveys for individual parks. The survey received 552 responses during the engagement period.

## INDIVIDUAL PARK IMPROVEMENT PLANS



COMMUNITY + HARMON PARKS



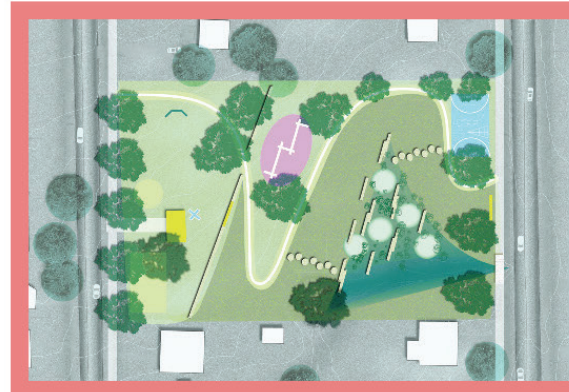
LYKINS PARK



KROGER YOUTH SOCCER COMPLEX



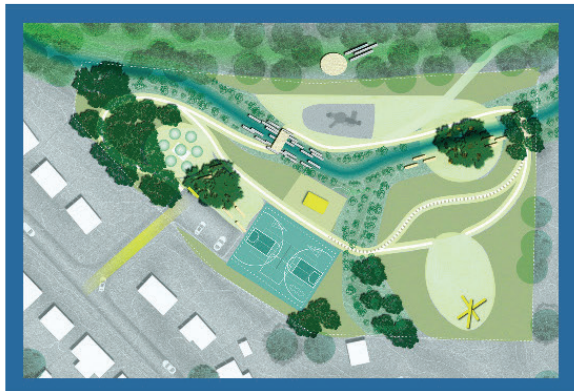
MELBOURNE PARK



FAIRFIELD PARK



HERITAGE PARK



WISEMAN PARK



MASSIE PARK



COLLEGE PARK

Proposed park concept plans for the ten parks are included in the master plan. Designed through the lenses of diversity, equity, and inclusion, concepts aim to ensure that all feel safe, welcome, and respected in Winchester's parks.



# PLAN PROPOSAL FOR COMMUNITY/HARMON PARKS



CONCEPTUAL LENSES

## ACCESS + CONNECTIVITY

Gravel pathways wind through the new play area connecting it to the rest of the park.

## DIVERSITY, EQUITY + INCLUSION

The splash pad integration fulfills the water play need most asked for by the community. It is integrated into the park through pathways and is surrounded by additional play areas.

## BIODIVERSITY + BEAUTY

Meadow areas and added trees enhance the natural beauty of the park while adding the ecological health and providing shade and habitat.



PROPOSED PLAN



EXISTING CONDITIONS

“[Make it] more kid / safe friendly [with a] splash park since we haven’t had a pool in years.”

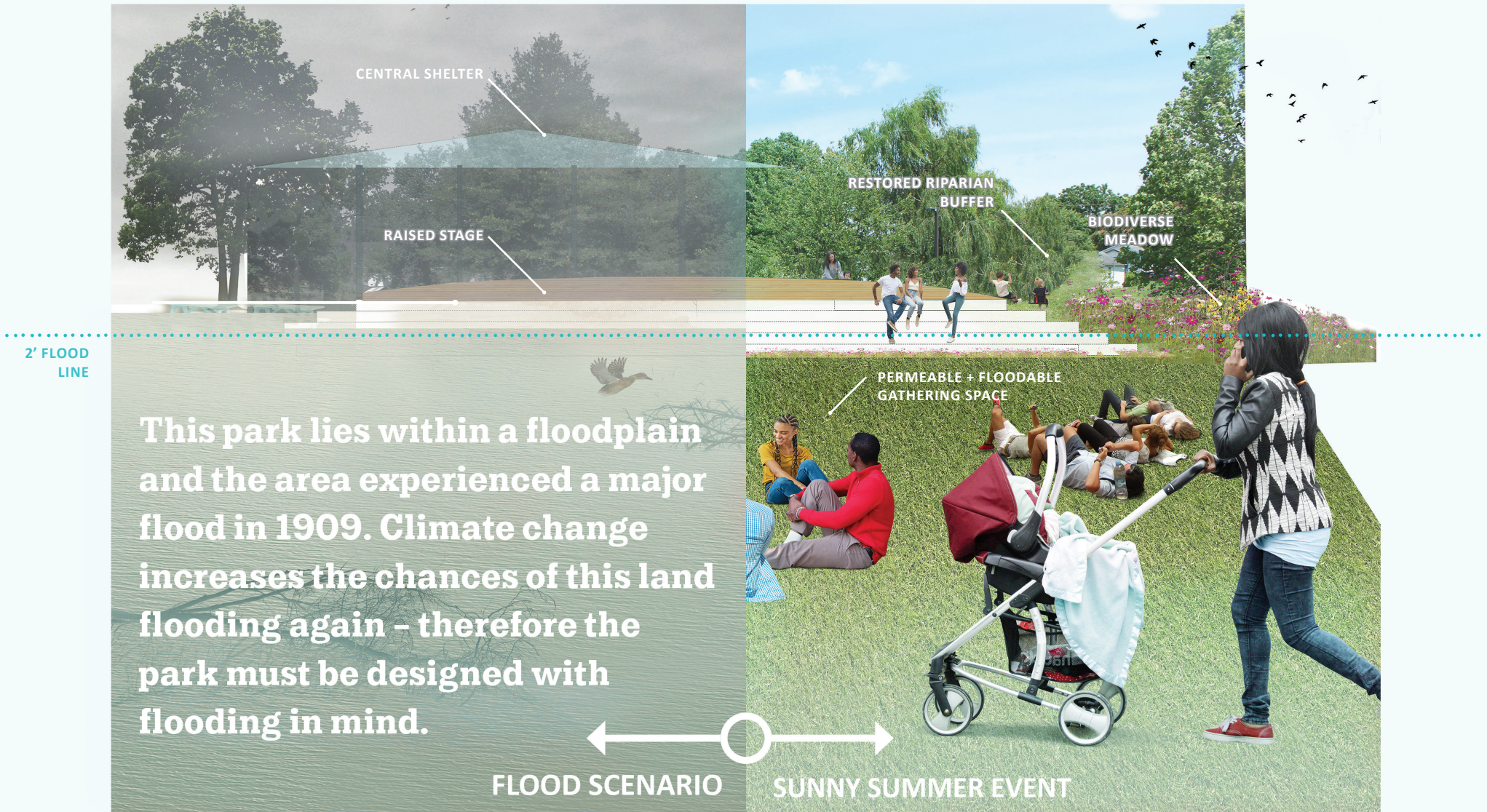
“Help make it better for the kids.”

VOICES OF WINCHESTER

The master plan proposes to connect Community and Harmon as one unified park, rename both as the community preferred “Harmon Park,” and integrate a splash pad and slide grove. It also includes the addition of walking paths and meadow plantings.



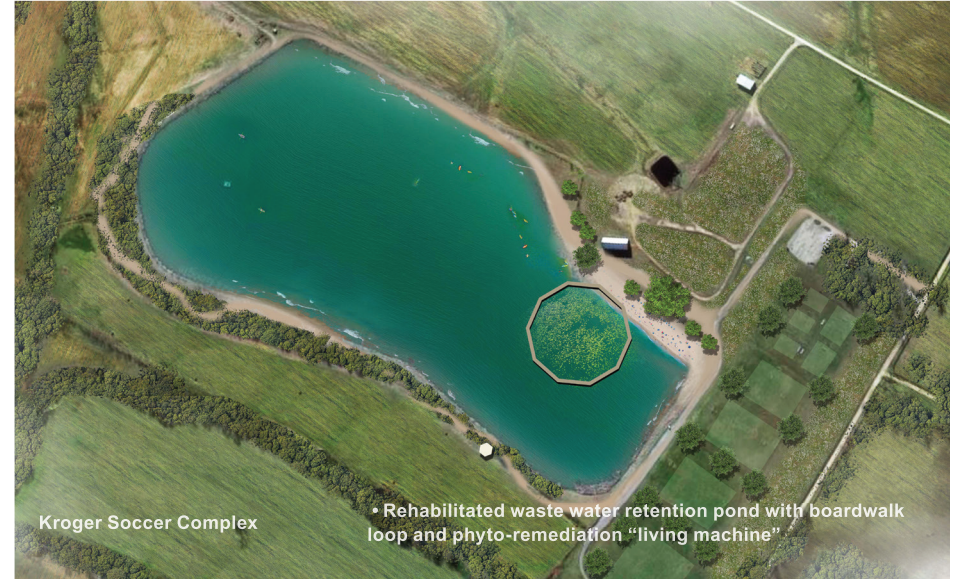
## FLOOD + CLIMATE PLANNING FOR HERITAGE PARK



Heritage Park's plan includes a performance stage, picnic areas, as well as sculptural signage and art to mark its significance for the Black community and Winchester. Having experienced a major flood in 1909, blue-green infrastructure strategies are highly recommended.



## PARK IMPROVEMENT VISUALIZATIONS



The plan includes visualizations of all ten parks to act as inspiration and aid in grant funding, and recommends implementing ongoing participatory design strategies to involve the community in the design process and to give a sense of collective ownership.