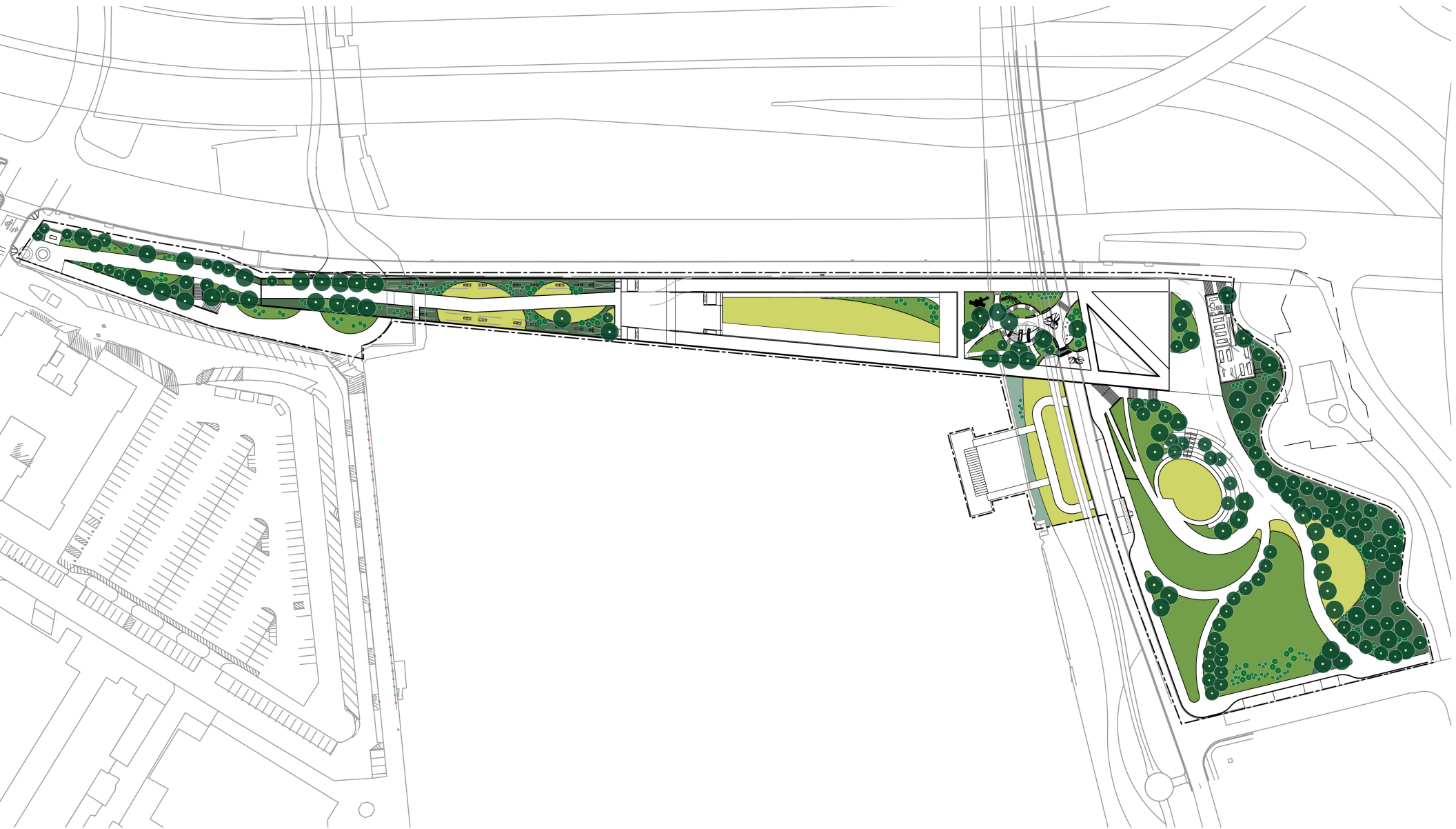




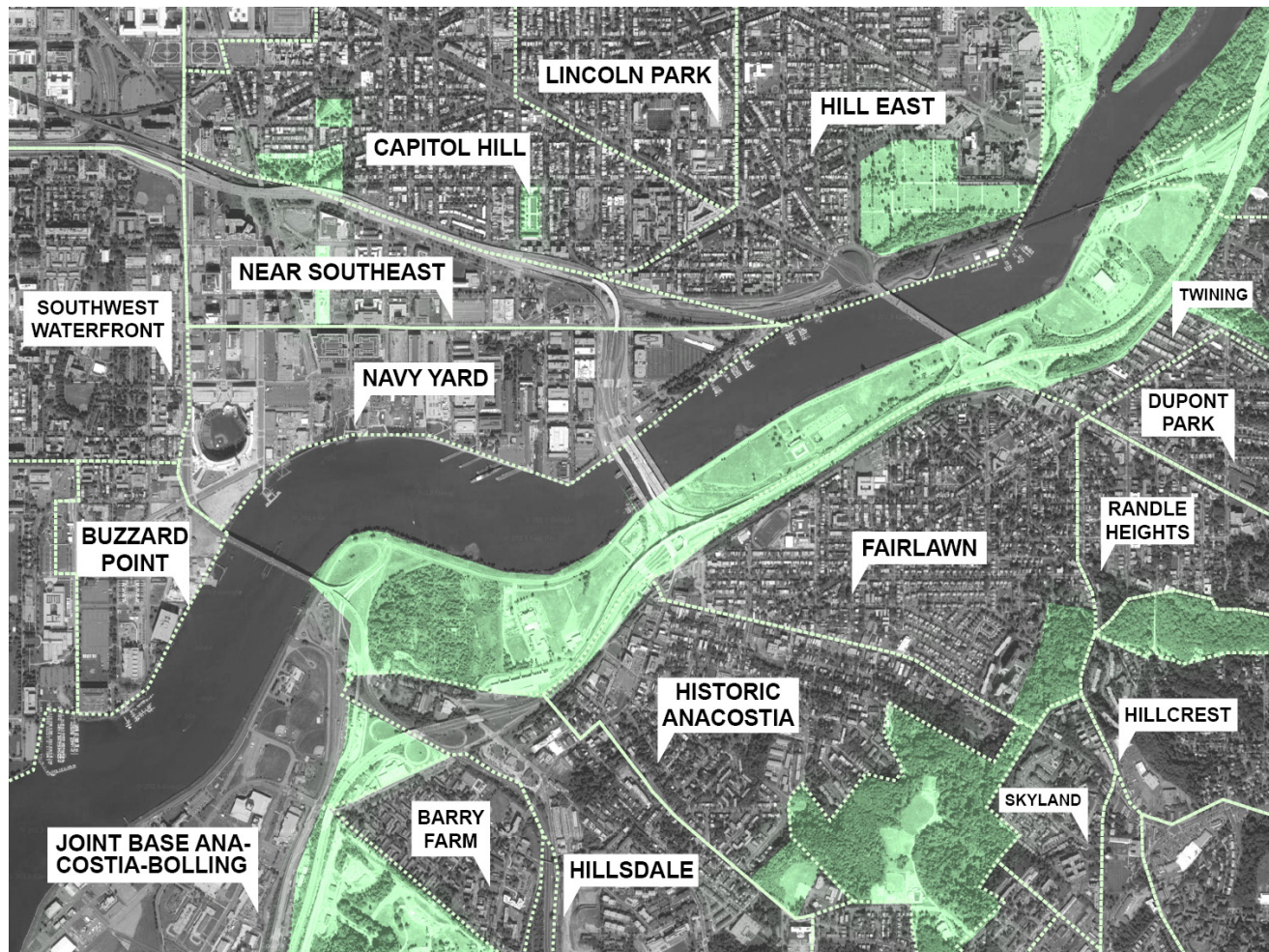
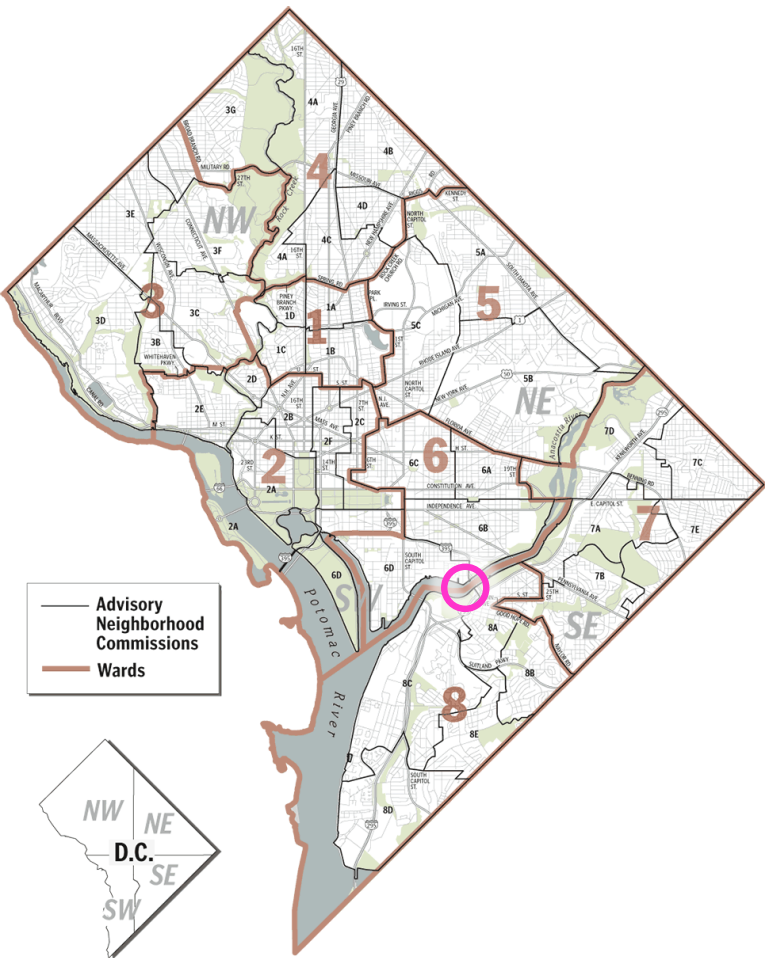
11th STREET BRIDGE PARK

The 11th Street Bridge Park repurposes aged infrastructure into a vibrant destination park that provides residents and visitors access to the Anacostia River.



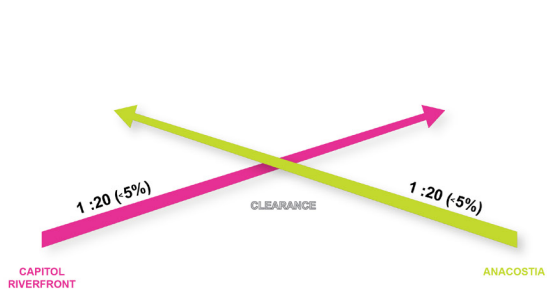
SITE PLAN

Accessible paths from each side of the river converge at the center of the bridge, creating a multi-functional plaza and the park's iconic "X" form that connects two areas of Washington, D.C., which have been historically separated.

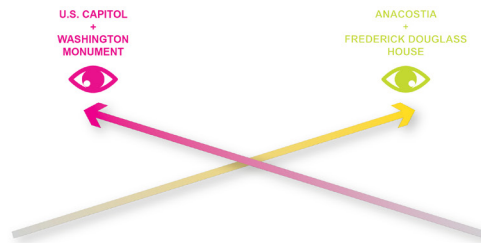


CONNECTING NEIGHBORHOODS

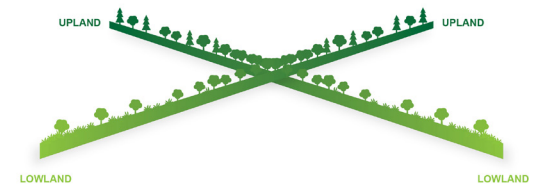
During urban renewal, the construction of regional highways along the river's eastern edge physically cut off many neighborhoods from this natural resource. The design for 11th Street Bridge Park seeks to reconnect them through access, education, and play.



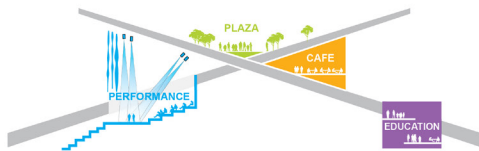
ACCESSIBILITY



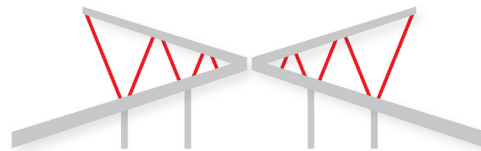
VIEWS



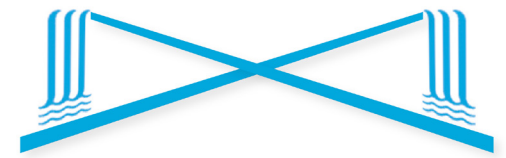
VARIED LANDSCAPE



FACILITATING PROGRAM



RATIONAL STRUCTURE



WATERFALLS

DYNAMIC PROGRAM

The iconic "X" form allows for programmatic elements to occur on top of, adjacent to, or below Bridge Park, creating a diversity of experiences and providing critical shade.



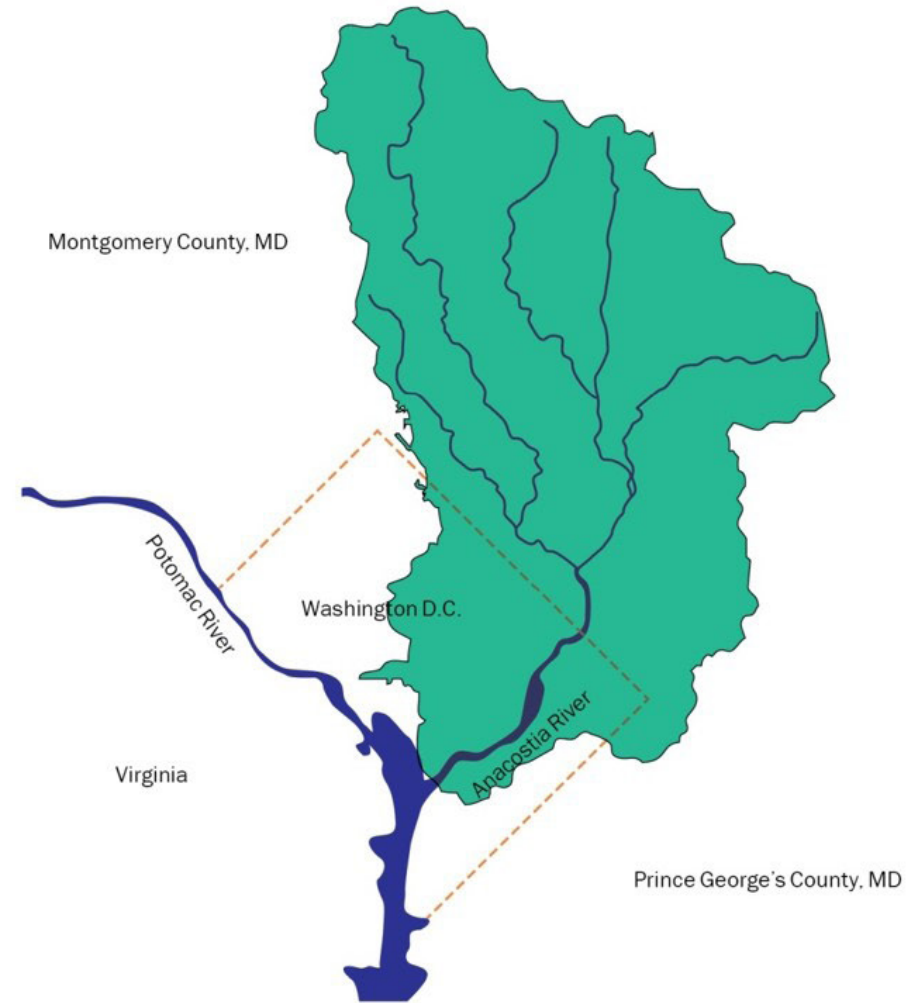
24-HOUR OPPORTUNITIES

Sloped accessible paths culminate in overlooks that provide views in both directions, including this view looking back to Cedar Hill, Frederick Douglass' home in Historic Anacostia.

Chesapeake Bay



Anacostia River Watershed



Regional Context

THE ANACOSTIA WATERSHED

The Anacostia River is 8.5 miles long, with 13 major tributary creeks and streams and a watershed covering 176 square miles. Future flood levels guided the landscape design and the location of the building program.



ECOLOGICAL STRATEGIES

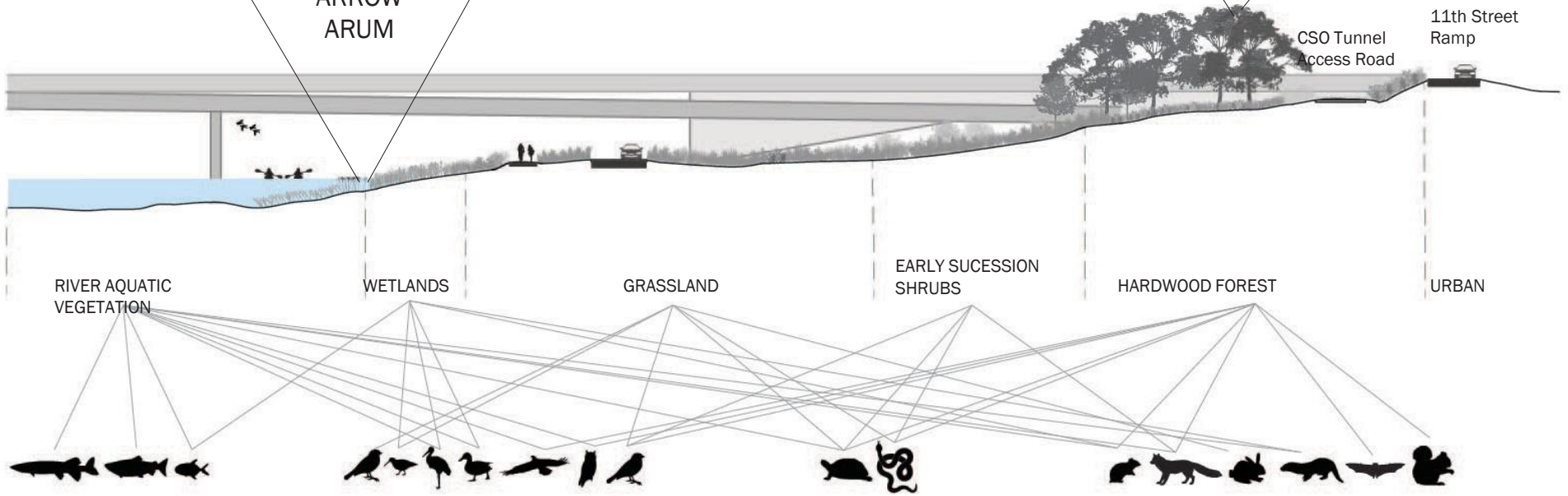
Educational exhibits throughout the park highlight local ecology, interpreting the river's water quality and future cleansing strategies, as well as planting zones, promoting the future health of the Anacostia River.



ARROW
ARUM



BLUE HERON
ROOKERY



Ecological Zones

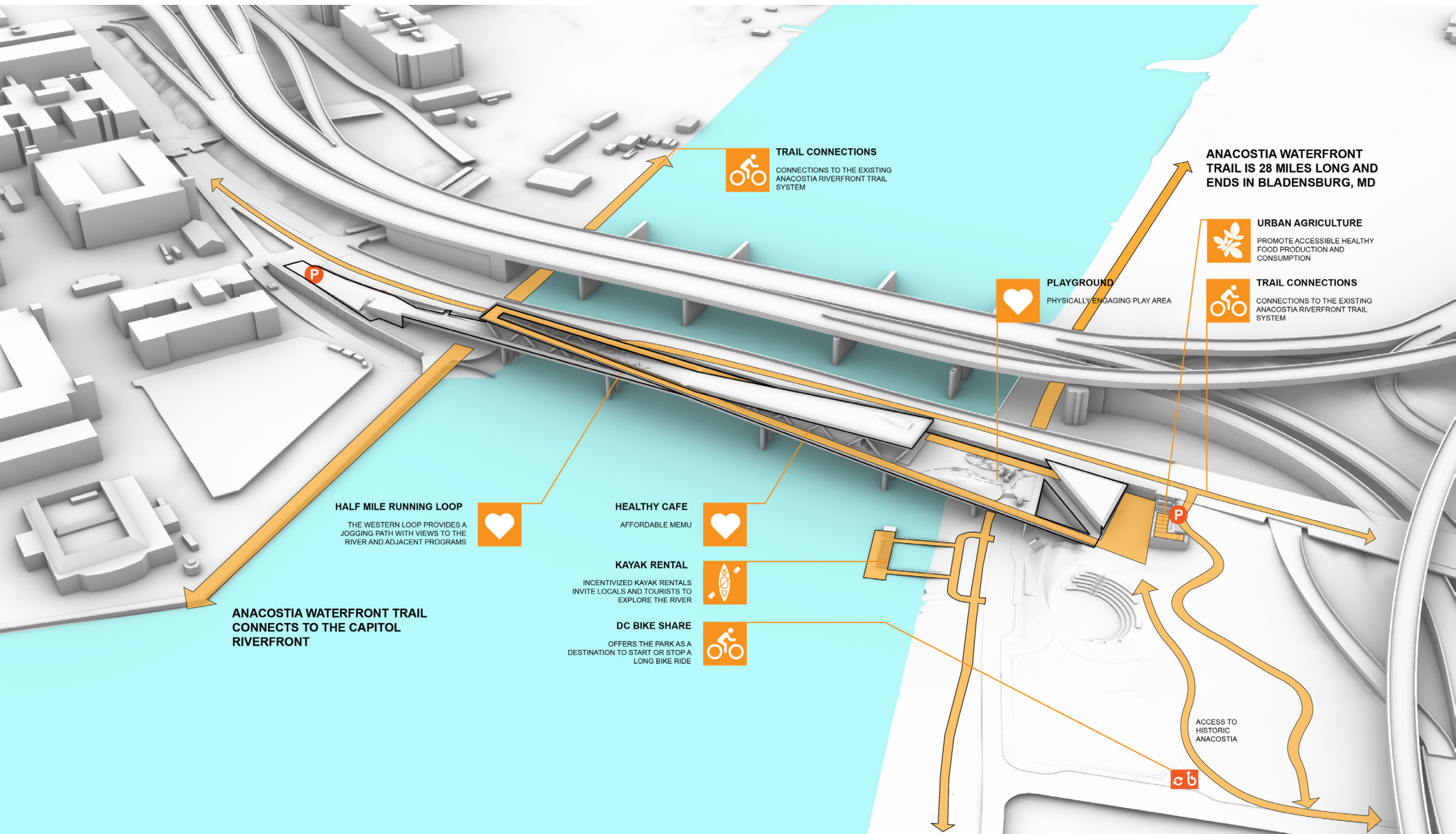
ECOLOGICAL ZONES

The curated planting design will provide a habitat for native species, infiltrate water, and reduce maintenance. Plantings were chosen based upon their relationship to water and topography.



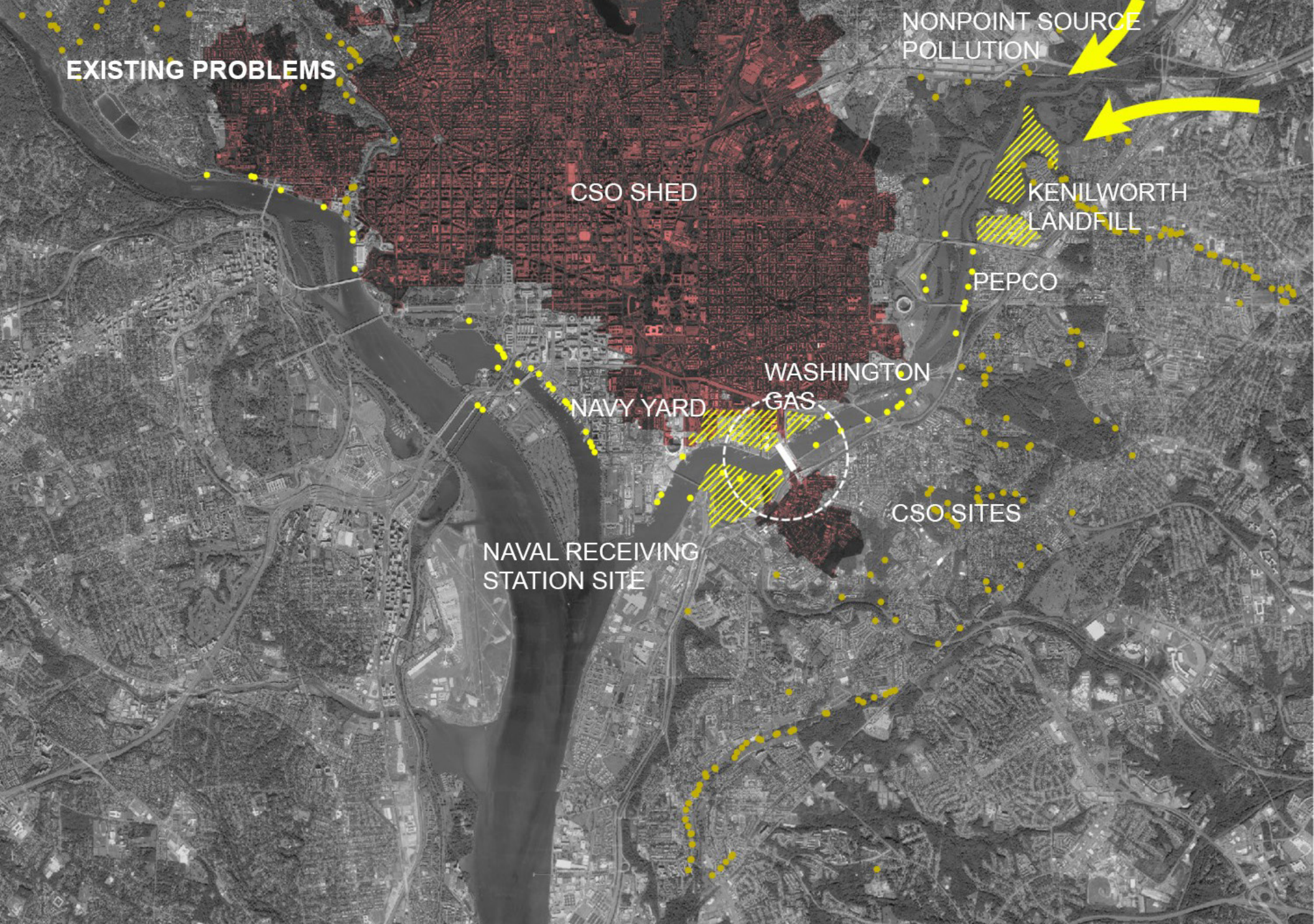
THE RIVER'S EDGE

A kayak/canoe launch provides the public with active recreation opportunities to get out on the river, allowing visitors to explore the river waters and wildlife habitats up and downstream.



HEALTH STRATEGIES

Improving the physical health of adjacent communities is a major consideration of the park's design. Through an intensive public engagement process, a wide variety of active recreation opportunities were integrated into the final design.



UNDERSTANDING POLLUTION

Existing site pollutants were analyzed, including combined sewer overflows, contaminated soils from a landfill on the east side of the river and former naval sites on both sides of the Anacostia, and trash and debris throughout the watershed.



ACTIVITIES FOR ALL AGES

Activated zones along the bridge provide opportunities for visitors, young and old, to engage and explore the Anacostia.



ECONOMIC DEVELOPMENT STRATEGIES

In addition to attracting visitors to the area and bolstering revenue for surrounding businesses, the park's design is as well self-sustaining in that it features revenue-generating opportunities through entertainment, retail, and food and beverage options.



A PLACE FOR PERFORMANCE

The park's design includes an amphitheater, which will provide the community and visitors with a variety of performances while taking in the river view.