



### Site Context

Waterside Park is located roughly 30 miles southwest of Pittsburgh and is near the top of the Chartiers Creek Watershed, which contributes to the Ohio River Basin. Untouched by development and home to a mature successional habitat and emergent wetlands, the site includes two small reservoirs and Chartiers Creek.



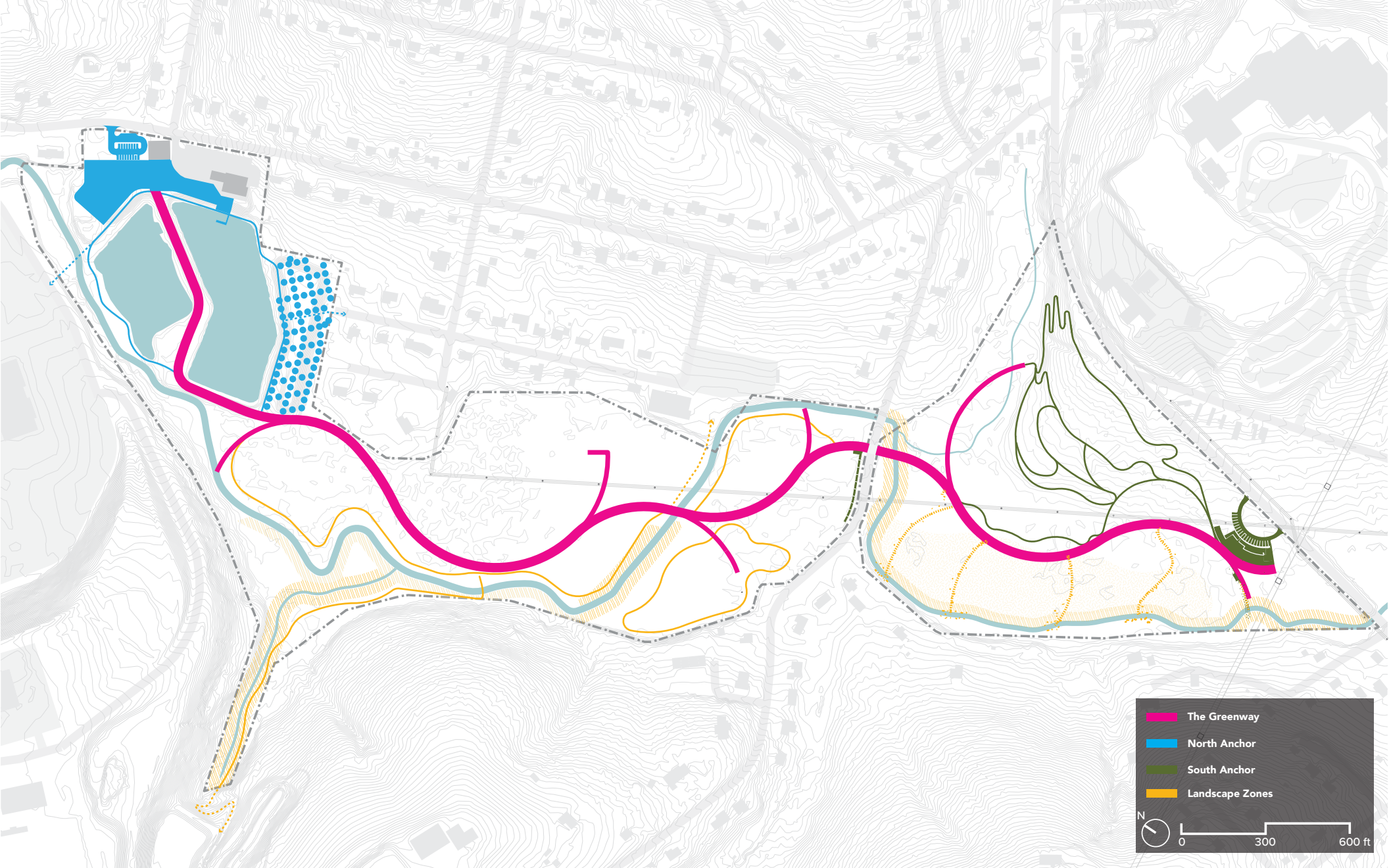
### Site Context

Waterside Park occupies the site of a former water company reservoir land. At the epicenter of Pennsylvania’s fracking industry, the project attempts to elevate the consideration of ecological assets and civic infrastructure in the public imagination of one of the most conservative counties in the state.



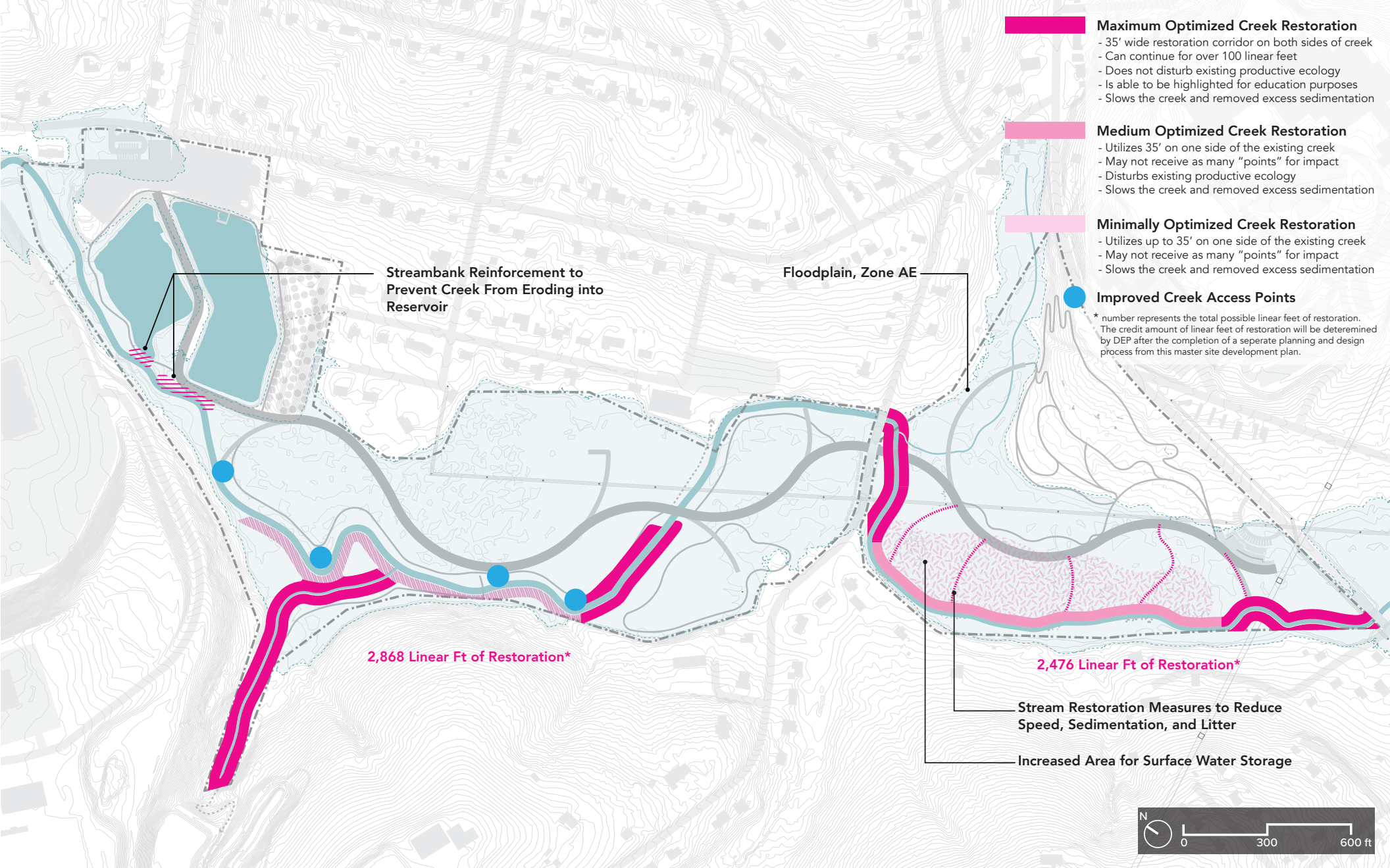
## Site Plan

The 89 acres of Waterside Park can be broken down in the following manner: 5.5 acres will be transformed into high quality public spaces, 45 acres will be enhanced from disturbed or low value landscapes into high value landscapes, and 38.5 acres will be preserved to maximize ecological services.



### Park Components

Waterside Park utilizes three main components: Civic Anchors — concentrated programs and areas of activity in two zones; Connective Greenway — a one-mile fully ADA accessible path that binds the various park elements and landscape zones together; and Distinctive Circuits — secondary trails with differing material types and experiential qualities.



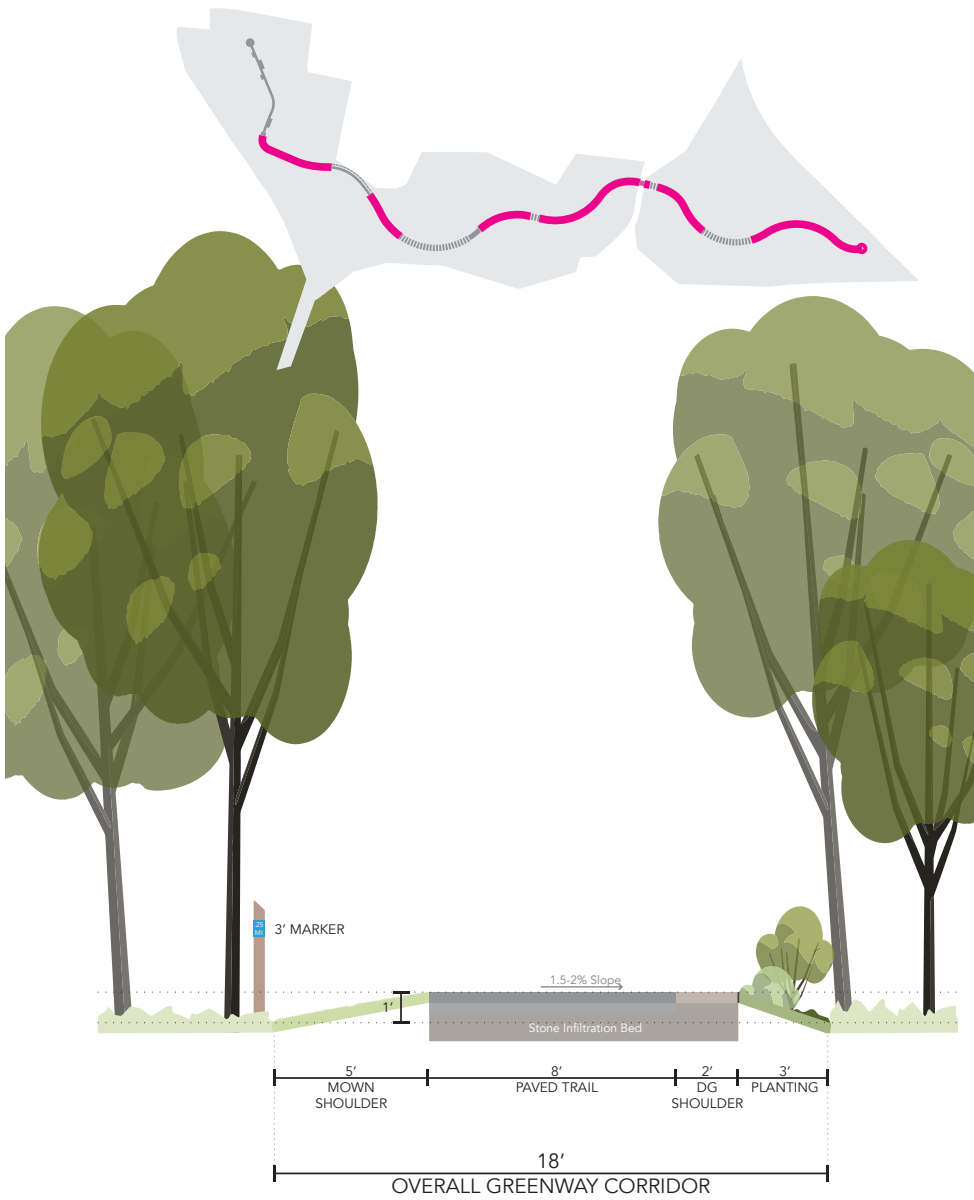
## Ecological Systems

Chartiers Creek is a major feature of the Waterside Park site, and the restoration work of this project is a similarly important feature of the overall design strategy. The project design leverages ongoing streambank restoration work as well as the introduction of additional floodplain storage strategies to enhance and emphasize the creek throughout the park.

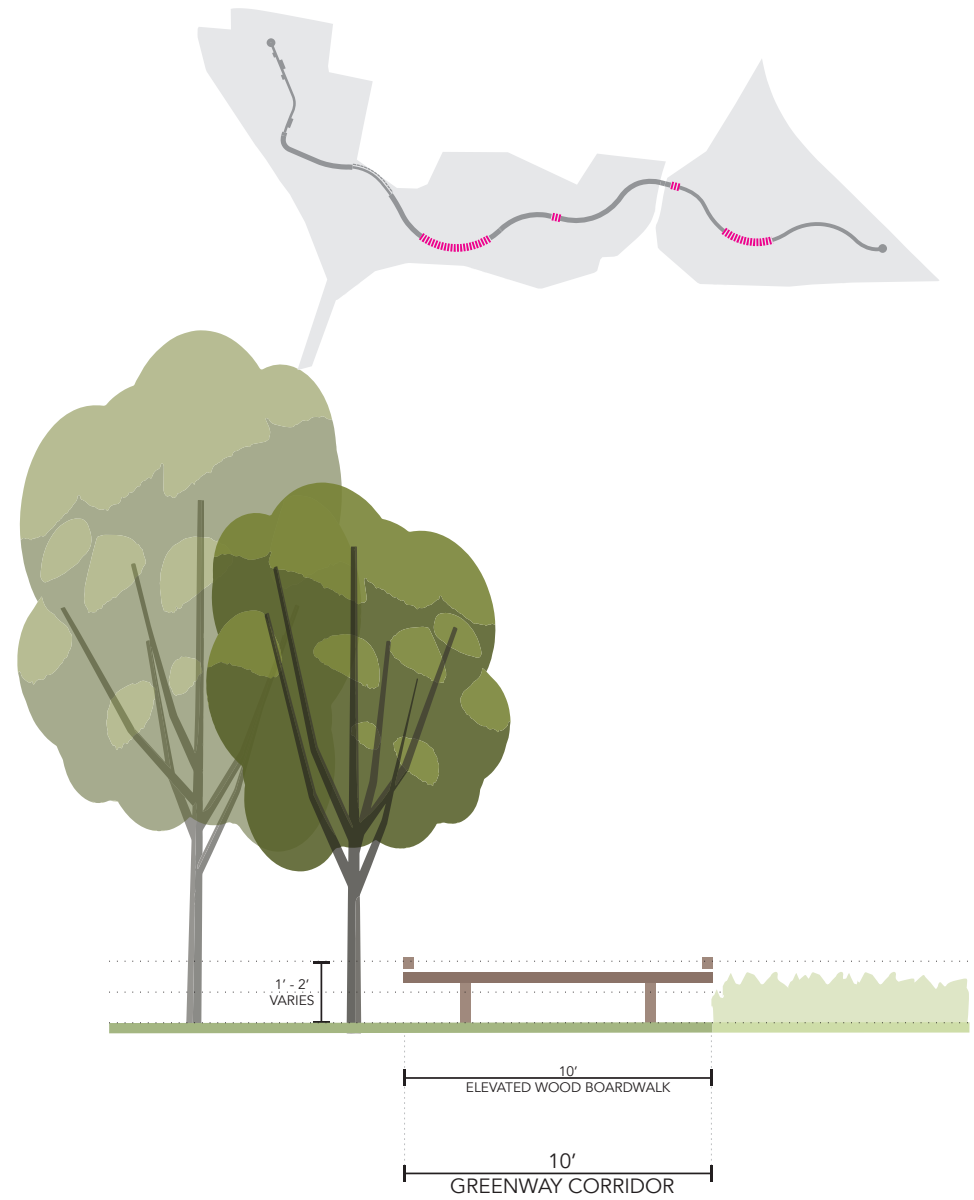


## Greenway

A principle feature of the park design is the one-mile greenway. Connecting the North and South Anchors, the greenway is: fully accessible, in terms of material and slope; has cross-sectional conditions to adjust to site conditions; and has a distance marker along its length to guide pedestrians and to provide location identification for emergency services.



**TYPICAL GREENWAY**



**BOARDWALK**

**Greenway**

The Greenway has four basic cross-sectional conditions (two shown here), allowing it to adjust to specific site conditions and to provide a variety of experiences.



## Greenway

The Greenway alignment is carefully considered in order to: minimize conflicts with on-site utilities; avoid disturbing core habitats; minimize complications with any current, or future, restoration work; provide a variety of experiences through, and connections to, the unique landscape zones that can be found on site.





## North Anchor

The North Anchor is centered around the reservoirs, water filter building, and new municipal building. The presence of these natural, municipal, and historical features helps to create the necessary framework for the future civic hub of North Franklin Township.



### **North Anchor**

The North Anchor is also a gateway to the rest of the site. Providing accessible entry to the greenway and secondary trails. It supports important connections to surrounding neighborhoods and to the mall.



## North Anchor

The two historic reservoirs provide an opportunity to create unique passive and active recreational experiences. In conjunction with the new spaces of civic collection, they are the defining feature of the North Anchor.



### **South Anchor**

The South Anchor is designed to serve as a “Community Classroom” — consisting of an adventure playground, outdoor learning spaces, and gathering spaces, the South Anchor will serve local neighborhoods and educational institutions. The anchor is also a trailhead for the Greenway and to the Hillside Trails.



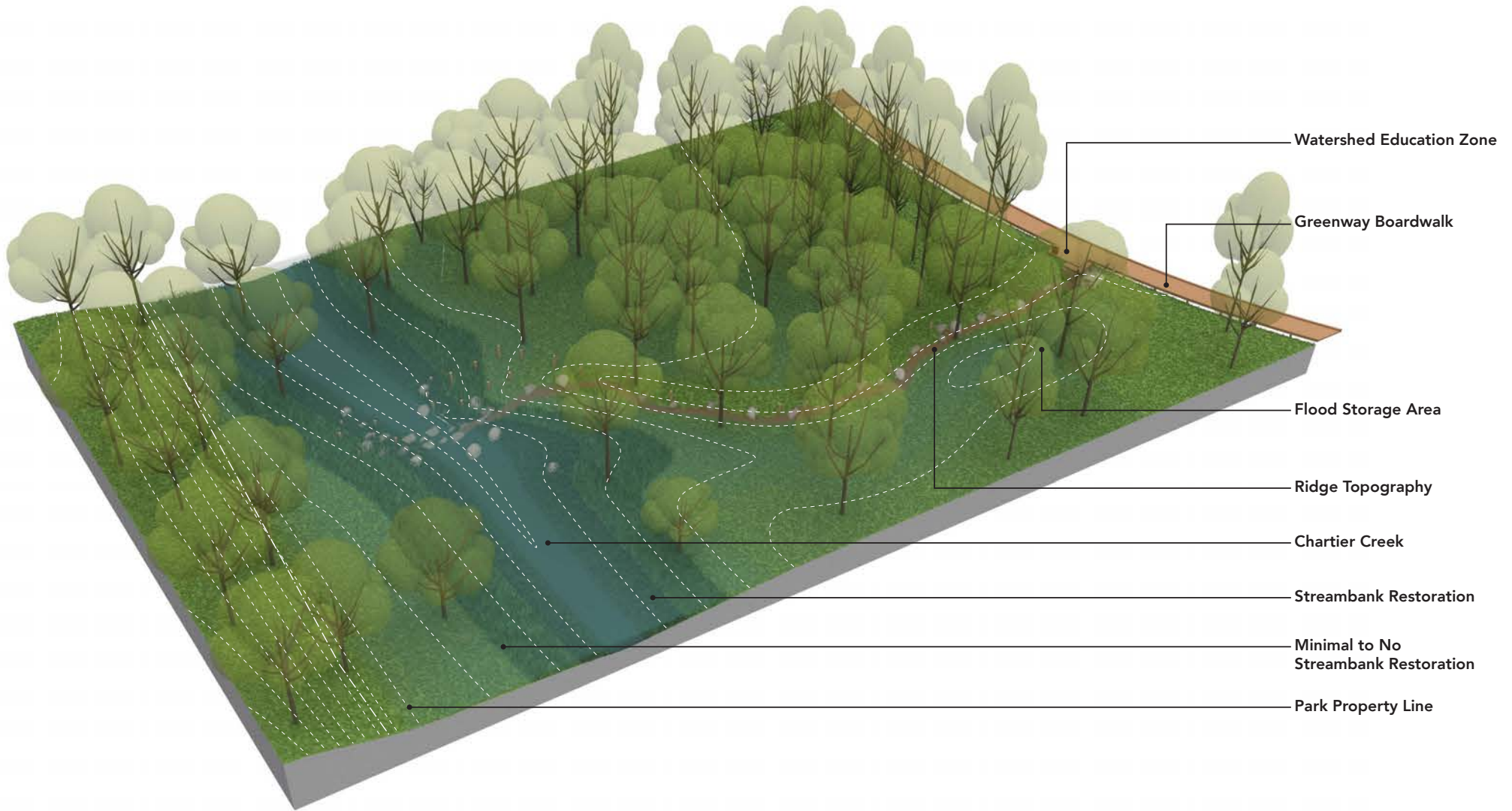
### **South Anchor**

A stabilized stone-fine walkway leads to the heart of the outdoor classroom. Situated along this path is a terraced wood seating element facing onto a planter that will be used for gathering of students of all ages. Across from this area are picnic tables set under a loose grove of shade trees. Further education opportunities exist along the greenway, at the intersection of each of the sedimentation ridge, explaining the importance of Chartiers Creek, the watershed, restoration work, and local flora and fauna.



### **South Anchor**

The ecological restoration and forest management in and around the South Anchor is a key component of this area, and the site strategy overall. Elements such as Sedimentation Ridges — strategic, topographical interventions that allow the creek to spread out across the landscape during flood events — decrease downstream flooding.



### Sedimentation Ridges

A key component of the south parcel landscape are the Sedimentation Ridges—a set of strategic interventions that allows the creek to spread out across the landscape during flood events. This will ultimately decrease downstream flooding by introducing new ridges of topography extending from Chartiers Creek to the Greenway.