

# A World In Tumult — How Do We Respond?

## Landscape Field Notes from a Post Pandemic Future

*With the challenges of a global pandemic that forced isolation, and a rise in authoritarianism and fearmongering, how does one make reason out of chaos, and opportunity out of tumult?*



LANDSCAPES ARE  
**Public Health**

LANDSCAPES ARE  
**Social Justice**

LANDSCAPES ARE  
**History**

LANDSCAPES ARE  
**Enviro Justice**

LANDSCAPES ARE  
**Art**

LANDSCAPES ARE  
**Future**

## Opportunity Out of Tumult

*Our studio came together to find a voice, language, and identity in the melee of uncontrollable circumstances, and invited constituency to participate in our conversations, recognizing that landscape, the connective tissue on which we stand, has the potential to render equity.*

# Landscape Field Notes from a Post-Pandemic Future: A Digital Magazine



## Landscape Field Notes from a Post Pandemic Future

*An instagram interactive “magazine” was created to address issues of public health, social justice, environmental justice, art, and history - all aspects held within landscape architecture - where our discipline can positively inform future constructs by uniting communities through dialogue.*

# Developing Language Out of a Mission

Graphics rooted in empathy and inclusivity

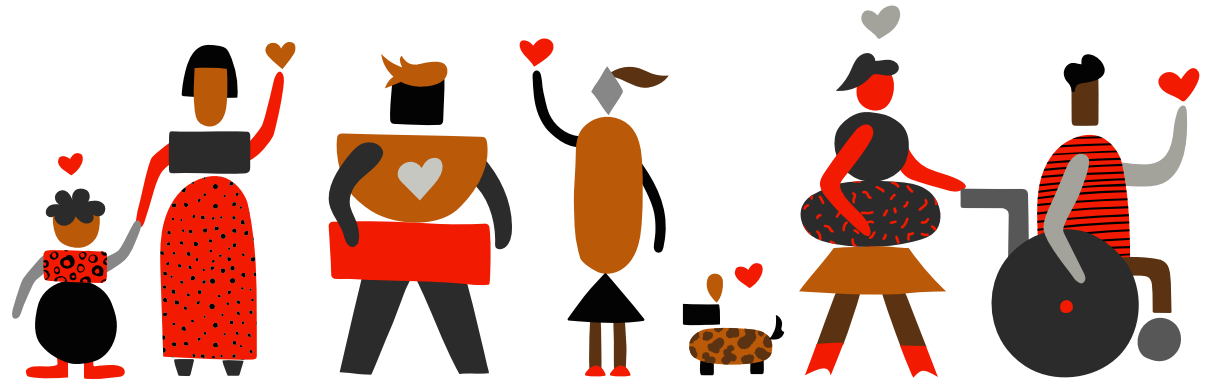
[LAND-SCAP]

## LANDSCAP

Noun: Archaic English (Mid-1600s) 1. Landscape

The Suffix “scape” in “landscape” posits the presence of a unifying principle which positions one view, a bounded landscape, as representative of the larger environment or entire landscape.

(Benjamin Lorch, The University of Chicago, Origins of Media, 2002)

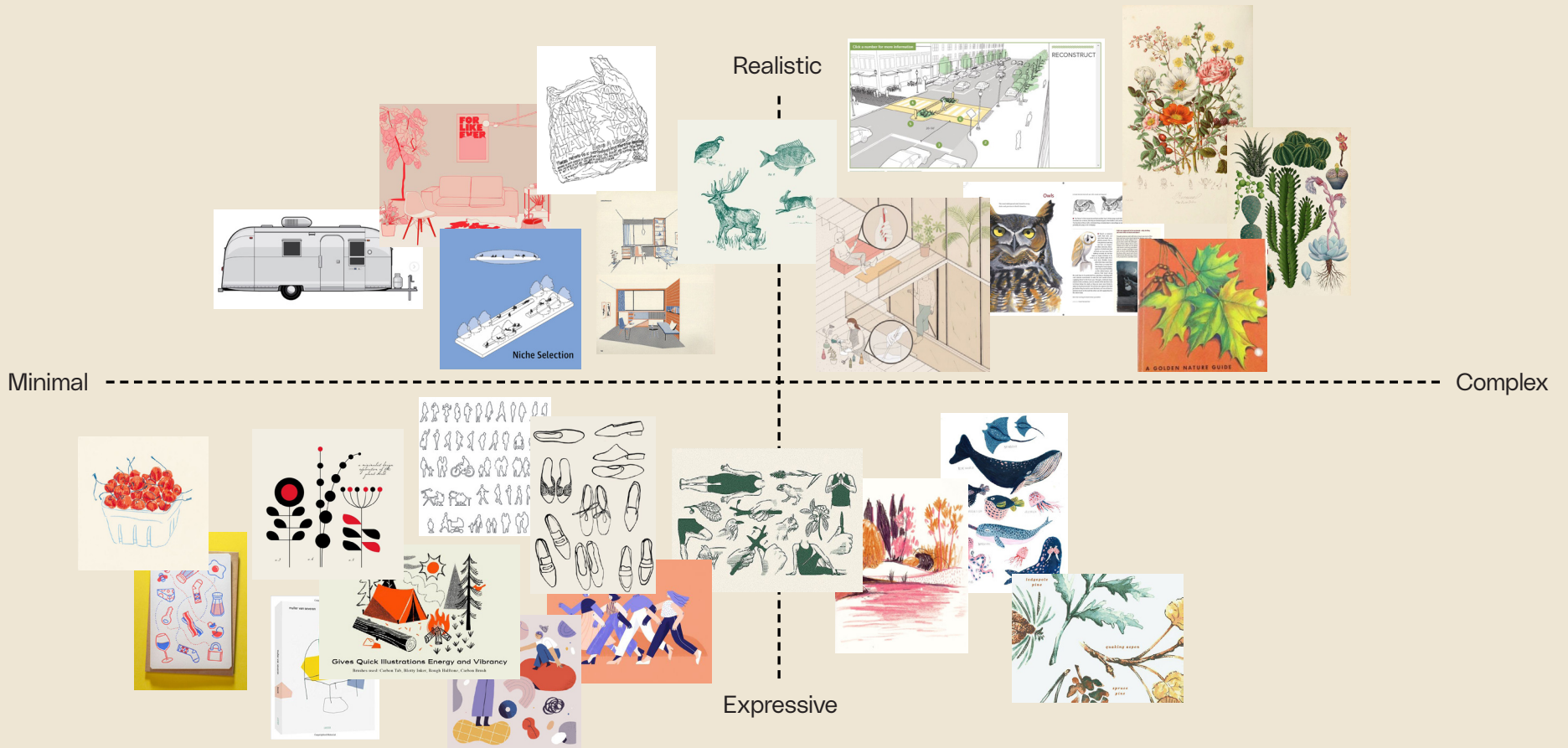


## How to Establish a Common Language

*Born from an empathy focused mission, and guided by defining “landscape” as a single point of view of the broad horizon, inclusive of static systems, living systems, sociology, and anthropology, a universal graphic language was created to cultivate accessible dialogue.*

# Creating an Accessible Language

An invitation for everyone to participate



## Describing an Accessible Language

*With an appreciation that the audience might range from age 8-80, we wanted to ensure that what we created was engaging and simple. After exploring a range of potentials, we arrived at an expressive and minimalist aesthetic.*

# Finding a Cohesive Voice

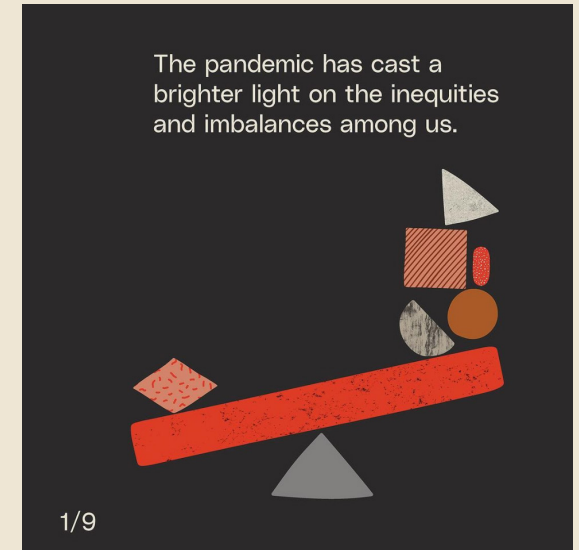
Abstracted shapes can be combined in many ways by non-illustrators to tell a variety of stories



Stories/Scenes



Abstract Ideas



## Finding a Cohesive Voice

*Describing a language that gives everyone opportunities to express themselves, the creators worked through fundamental shapes and textures to allow for a language that is accessible to all and facilitates opportunities for storytelling and the expression of abstract ideas.*



## Instagram as a Vehicle for Expression

*Instagram as a vehicle for expression allows for singular posts or up to 10 linear constructs, allowing for an arc of narrative that is both “bite-sized” and rich in content.*

# Structured Stories

Context

Visual Storytelling

Statistics & Quotes



**LIFE IN THE ANTHROPOCENE**

We live in a human-dominated world. Our choices impact every other living thing on this planet.

Now that climate change is threatening the livability of the earth, we need to make decisions that benefit more than just the bottom line. Landscape architects have the ability to balance human betterment with ecological resiliency.

RESILIENT ECOSYSTEMS ARE FREE OF...

...CLIMATE CHANGE VULNERABILITY

... POLLUTED AIR & WATER

... ECOSYSTEM FRAGMENTATION

*The United States is losing a football field's worth of natural area every 30 seconds.*

1. Center for American Progress, October 22, 2019

Instead, resiliently designed ecosystems mitigate human development through habitat restoration practices.

landscape corridor

stopping stone corridor

linear corridor

TO BUILD FOR RESILIENCE WE'LL NEED TO DESIGN WITH NATURE.

How can we do better to adapt towards a resilient & inclusive future?

Diagrams & Infographics

Visual Storytelling

Invitational Question

## Structured Stories

*The structure of each post follows an arc that allows for traditional expression - introduction, body, and coda in question form - facilitating the expression of ideas with stimulating punctuations, and engaging antecedents to spur conversation.*



# Impactful Medium

Instagram is an accessible platform that enables a community.



Sharing

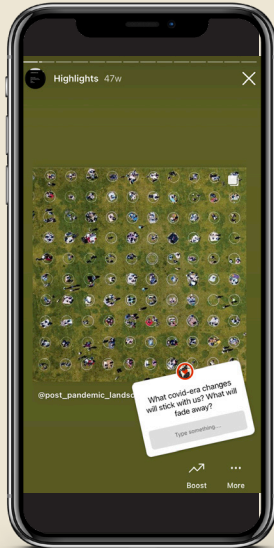


Engagement



Call to Action

Polls:

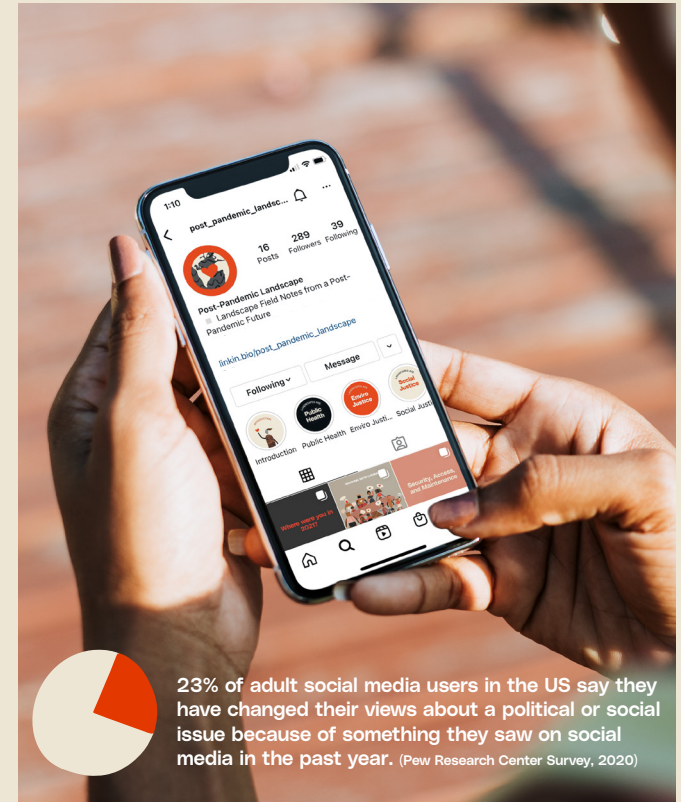


Polls and questions allow for multiple voices to be heard in response to complex ideas

Takeovers:



Takeovers afford insight into perspectives from different individuals and disciplines



23% of adult social media users in the US say they have changed their views about a political or social issue because of something they saw on social media in the past year. (Pew Research Center Survey, 2020)

## Impactful Medium

*Instagram's platform allows for sharing engagement and calls to action, in a manner that has potential to be exponentially impactful through shareability while having the capacity to solicit inquiry, comment, and takeover multiple points of view.*

# Intended Audience



375



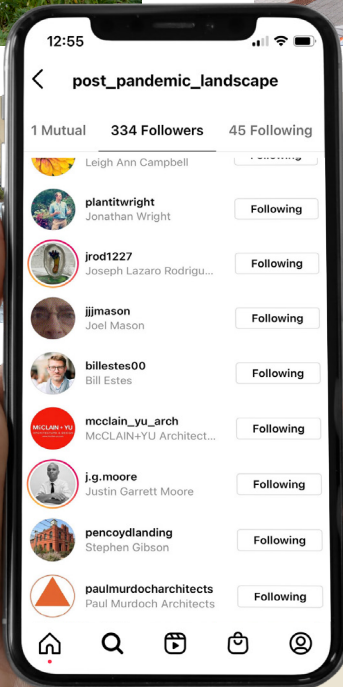
@jonathan\_geels: "That @splcenter 'Whose Heritage' report is exceptional. That monument graphic is a powerful tool."



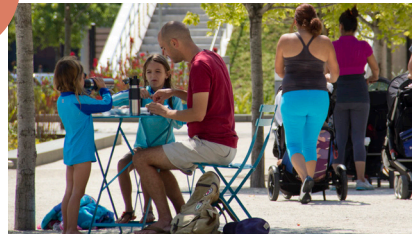
@paulmurdocharchitects: "Great initiative - love the graphics!"



@jaywalljay: "Yes! Can we talk about inequitable access to green space?"



@ellestein: "@jo.guan thought you might like this account!"



REACHING BROAD AUDIENCES

## Our Followers' Age Range:

18-24: 16%	25-34: 37%
35-44: 27%	45-54: 9.6%

## Top Countries Reached:

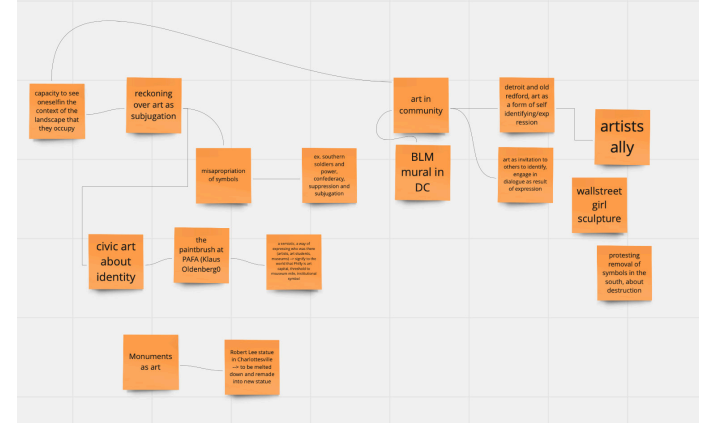
US: 80.7%	Canada: 8.7%
India: 2.1%	UK: 1.3%

# Intended Audience

With an aspiration to positively inform diverse age range, ethnicities, and experiences, @Post\_Pandemic\_Landscape has the potential to reach a broad audience through versatile technology and an accessible visual language.

# Process: Creating a Post (Collective Consciousness)

## VIRTUAL AND IN-PERSON CHARETTES



## RESEARCH AND STORYBOARDING

EXPRESSION AS A CATALYST FOR CHANGE

Art has played a powerful role during the BLM process that has changed lives. It has been a powerful step in the journey towards an end of racism. It has been a powerful step in the journey towards an end of racism. It has been a powerful step in the journey towards an end of racism.

AN INFLUENTIAL MONUMENT

THE 25 MOST INFLUENTIAL WORKS OF AMERICAN PROTEST ART SINCE WORLD WAR II (PUBLISHED 2020)

In the midst of nationwide protests, artists have come together to discuss the pieces that have not only been reflected in the art, but have had an impact.

In Richmond, Va., Protesters Transform A Confederate Statue

In the wake of nationwide protests, artists have come together to discuss the pieces that have not only been reflected in the art, but have had an impact.

A Black museum asks to melt Charlottesville's Robert E. Lee statue to create new art

In 2017, debate over Charlottesville's Robert E. Lee statue ignited a violent riot that left a memorial dead. Now, a Black cultural center wants to melt it down and turn it into public art.

We take something negative and turn it into something positive, something beautiful, something that represents our past and our future to come.

Confederate statues were built to further a white supremacist future. These monuments placed in the public landscape were created as part of a multi-national program intended to instill the story of the civil war from a white southern slaveholder's point of view.

→ NOW & FUTURE

THE FUTURE OF OUR PUBLIC ART AND HISTORIES

The next generation of monuments through a series of conversations and publicly held to explore an experiential history of public spaces.

A Black museum asks to melt Charlottesville's Robert E. Lee statue to create new art

In 2017, debate over Charlottesville's Robert E. Lee statue ignited a violent riot that left a memorial dead. Now, a Black cultural center wants to melt it down and turn it into public art.

Confederate Statues Were Built To Further A White Supremacist Future

Protesters have melted this statue as an African American rider sitting atop a horse. In response to the line of Confederate statues being removed from the city of Charlottesville, Va.

'Rumors Of War' in Richmond Marks A Monumentally Unequal America

African American artist sitting atop a horse. In response to the line of Confederate statues being removed from the city of Charlottesville, Va.

THE THERAPEUTIC GAZE OF SIMONE LEIGH'S 'BRICK HOUSE' - AFROPUNK

If you've ever heard and start looking up on up Martha's Vineyard, you might begin to see her in a new light. Around 2018 or 2019, the artist made her way to the island, where she lived in a small house in a town of about 1,000 people.

MONUMENT LAB - Creative Speculations for Philadelphia - Monument Lab

A living handbook for real conversations on public art and history.

How Do We Build a Better Future? | MoMA Magazine | MoMA

Artists like Kara Walker and Marlene Dumas have been exploring Black history through history of resistance and protest art.

## The Collective Consciousness

Coming together virtually, and in-person when possible, thematic explorations were broken down into manageable sub-chapters from which Instagram posts could be created. Limitation of up to 10 slides allowed for strategic posts consisting of manageable but deep content.

# Process: Creating a Post (Individual Consciousness)

## RESEARCH AND STORYBOARDING

**ART IN BUILDINGS/ART IN LANDSCAPE**

Prior to the 17th century, art was only accessible to the rich and powerful adorning their own private galleries and denoting their wealth.

This would change with the introduction of public art museums which primarily housed art within their walls, leaving monuments and tokens of victory for the landscape and public spaces.


(PAFA is first art museum and school in US 1805)



Lanfest PAFA inside vs outside

While public, art within architecture inherently creates barriers, not only physically, but through admission fees, social stigmas, and in the age of COVID-19, safety.

These factors put art out of reach for many and limit the accessibility of art to all.



But arts relationship with the landscape was not to be contained within a painting...




Public art, which gained appeal in the 20th century, brought art out of buildings and into the landscape, allowing for the greatest amount of interaction and exposure.

new deal include qualifications



bean


During the pandemic, these open-air, social-distanced, and accessible installations with public spaces have at times served as the sole and primary exposure to the arts for many.



—This shift allowed for new, previously stifled, voices to be heard as the curated regulations of museums gave way to artist expression in civic spaces and landscapes.

Arts placement in the landscape and mutually shared public spaces put it within an approachable and safe landscape, inviting higher levels of interaction.

*“Working on posts, I’ve observed how each of us as designers address the same topic from varying angles based on individual experiences and narratives surrounding landscape. The biggest challenge has been balancing graphically breaking down these complex ideas brought up in our discussions in an understandable and informative way.”*




**A MANTLE**

With its larger audience, art within the landscape can more fluidly reflect the sentiments of citizenry

**LOOKING FORWARD**

The pandemic has additionally shifted arts accessibility into the digital landscape through virtual museum visits, the rise of NFTs, and the perceived metaverse



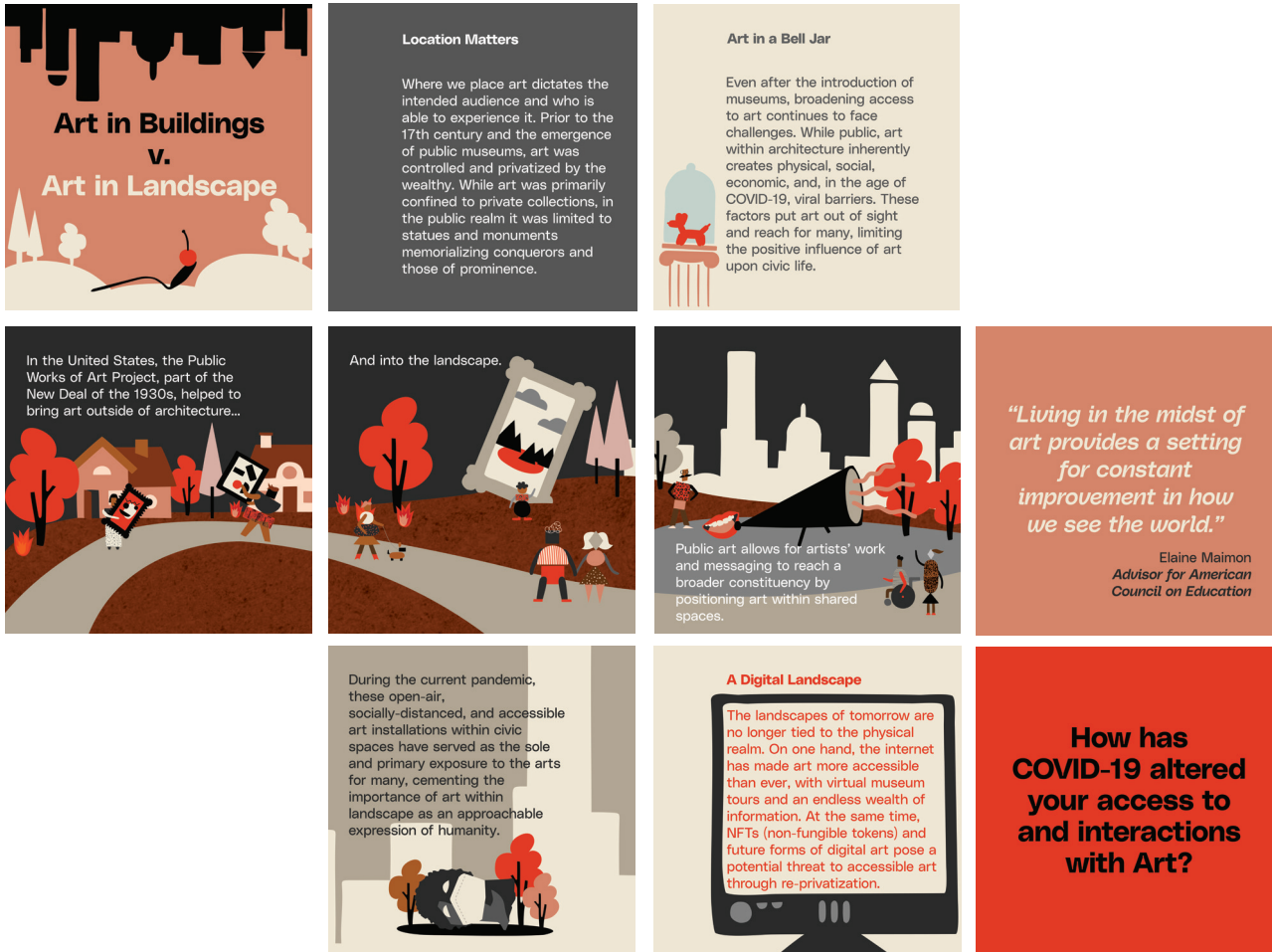
more modern tech      physical barriers replaced with digital privatization

**HOW HAS COVID-19 SHIFTED YOUR ACCESSIBILITY TO AND EXPERIENCES WITH ART?**

## Individual Consciousness

*Working within sub-chapters, individuals were invited to tackle heavy subjects from a personal point of view, always, starting from a broad focus and ending in an invitation to participate, describing an accessible article that invites engagement.*

# Finalizing and Posting



**post\_pandemic\_landscape** Art is an expression of humanity, and where it is placed directly impacts who has access and how this humanity is experienced. Expanding the placement of art beyond the interiors of museums and galleries into landscapes and civic spaces democratizes access to the impact of art, allowing for collective and individual experience unconfined by physical, socio-economic, and even viral barriers. In turn, this accessibility allows for artists to reach broader, more diverse audiences, engaging the many rather than the few.

Especially in a time of face masks and social distancing, where many decide to forgo the risk of indoor museums and performance halls, art in landscape has become a mainstream source of artistic expression and access. As designers, citizens, and human beings, it is crucial to continue advocating for art within shared landscapes, and to promote the continued exploration of this intersection. Where do you experience art in your life? How has the pandemic altered, decreased, or increased that experience?

#PostPandemicLandscape #BruceMauDesign #LandCollective #ArtLandscape #NFT #Covid19

1w



**lindseykerr** I haven't been to a museum or anything art related since Covid hit. I live in an area with very little accessible public art. I think murals are the only obvious art I have seen since 2019.

1w 2 likes Reply



**\_lostvocabularies\_** I see my privilege in saying my interaction with art has improved over the pandemic. I've been able to travel safely and walk through museums with far less people, allowing me to really connect with the art. Online conversations and lectures have been amazing as well. But these experiences have also brought to my heart what this post is about and I really do hope more accessible and diverse art moves into the public realm.

1w 2 likes Reply

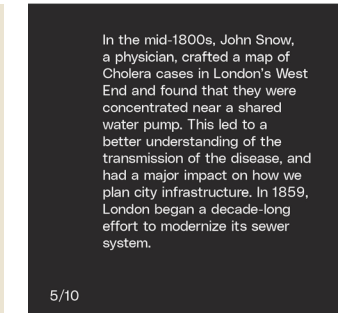
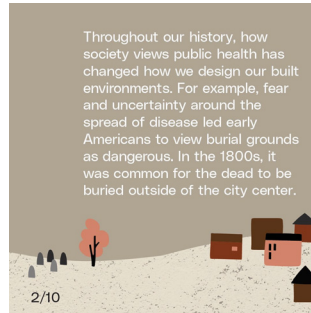
## Out in the World

*With published posts concluding with a question or call to action, the invitation to participate becomes realized in responses from followers, many from a personal point of view, and some thoughtful self-reflection.*

# A Teaching Moment

## Landscape & Public Health

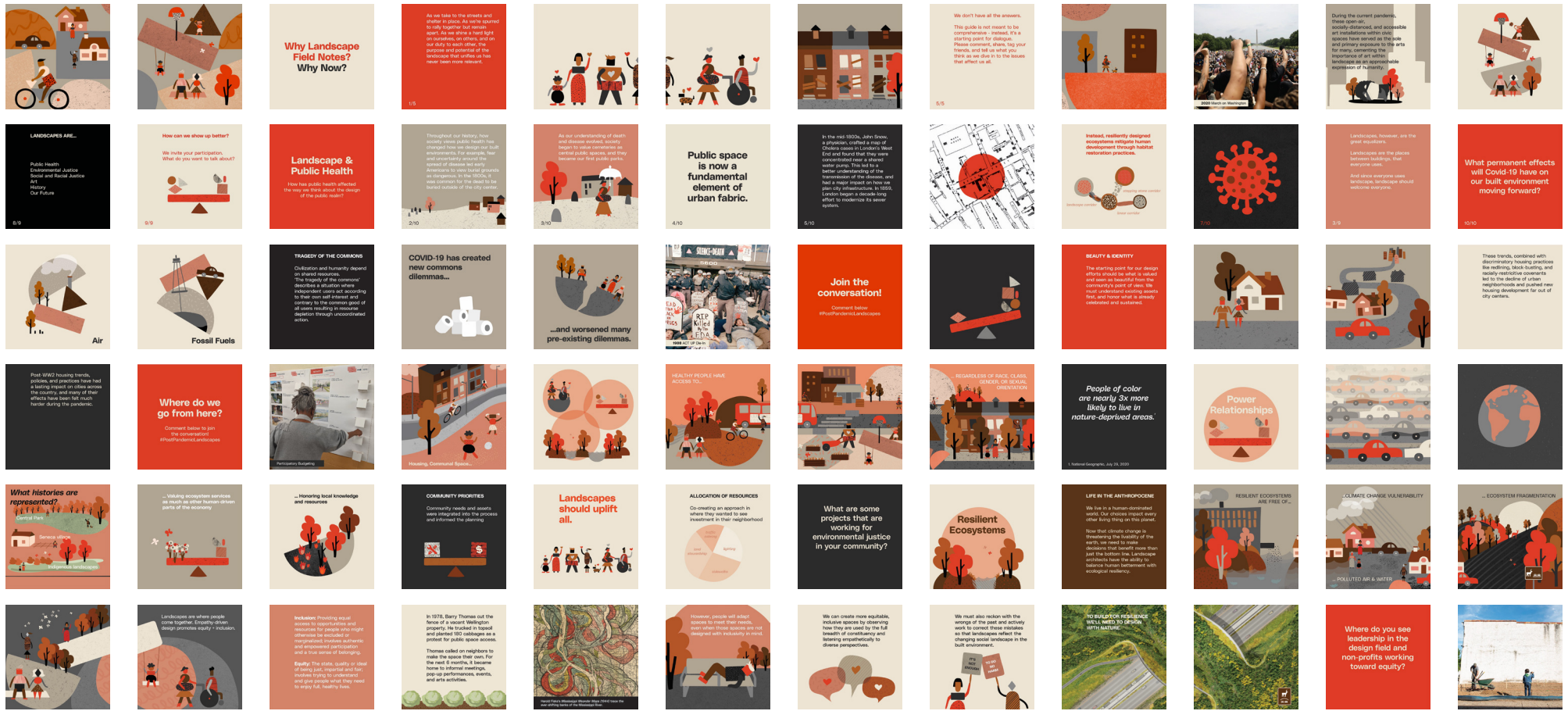
How has public health affected the way we think about the design of the public realm?



## A Teaching Moment

*Our goal is to empower designers and non-designers alike in discussions of daily civic life in which landscape is ever present, acting as a powerful cultural identifier of static and living systems. @Post\_Pandemic\_Landscapes broadens people's understanding of landscape architecture's global impact.*

# An Instagram Quilt



## An Instagram Quilt

*@Post\_Pandemic\_Landscapes has established a framework and language from which to discuss challenging topics in an accessible and enriching manner. The quilt continues to grow as a landscape and its palimpsest continue to expose more opportunities for engaging in productive dialogue.*