

GRAND JUNCTION:

Climate Crisis Resiliency, Stormwater Management, and
Riparian Corridor Reparation Meets Social Overlay



Grand Junction resolved 70-years of degradation due to the Swamp Act of 1850, redescribing the channelized Cool Creek into a naturalized condition, increasing soil stabilization, diversifying riparian species, ameliorating stormwater challenges, and reconnecting citizens of Westfield, Indiana, to their natural resources.



CONNECTIVITY

Describing a new central park, Grand Junction unifies five trails into a common amenity node, positioning the city's neighborhoods in dialogue. Stormwater management, riparian corridor reparation, and diverse programming defines a new downtown core, bringing together neighbors, friends, and visitors.



WHERE TRAIL MEETS PARK

Home to the future Trailhead Pavilion, the Meadow Overlook provides opportunities for rest, people-watching, and play. Surrounded by burgeoning meadow, the Overlook is a flexible and welcoming space featuring clustered seating and contained lawn for activity or quiet thoughtfulness.



RIPARIAN RESTORATION MEETS SOCIAL OVERLAY

The Wetland Amphitheater takes advantage of the sloping riparian edge, and renders wood as if water, fluidly cascading toward Cool Creek. This resilient feature can withstand inundation without interfering in natural flooding processes while offering opportunities for performance and gathering.

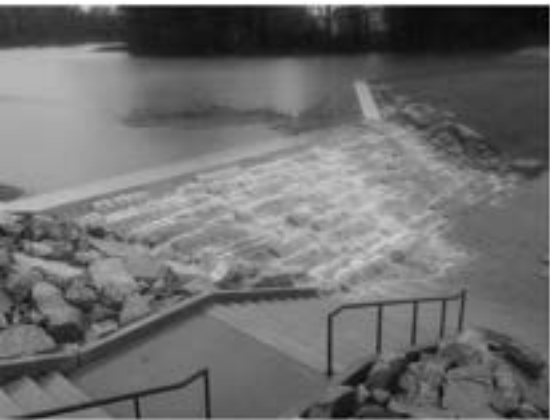


SETTING THE STAGE

Taking advantage of the rehabilitated riparian corridor overlook, the Wetland Amphitheater stage and tiered seating focuses on Cool Creek as “river theater”. Westfield’s new venue “floats” within the sinuous corridor, establishing the waterway as character in every performance and gathering.

SOCIALLY ENGAGED INFRASTRUCTURE THE REST OF THE YEAR

DURING FLOODS



HOLISTIC STORMWATER SOLUTIONS

Grand Junction's weir overflow is designed for both performance and aesthetic engagement, resolving challenging increases in frequency and duration of storms while adding an additional entry trail sequence. Pixelated limestone reflects material and texture used throughout the park.



HOLISTIC STORMWATER SOLUTIONS

The bridge underpass serves as social conduit and matriculation point from the south, but also creates river theater as people gather along the creek edge for exploration and discovery.



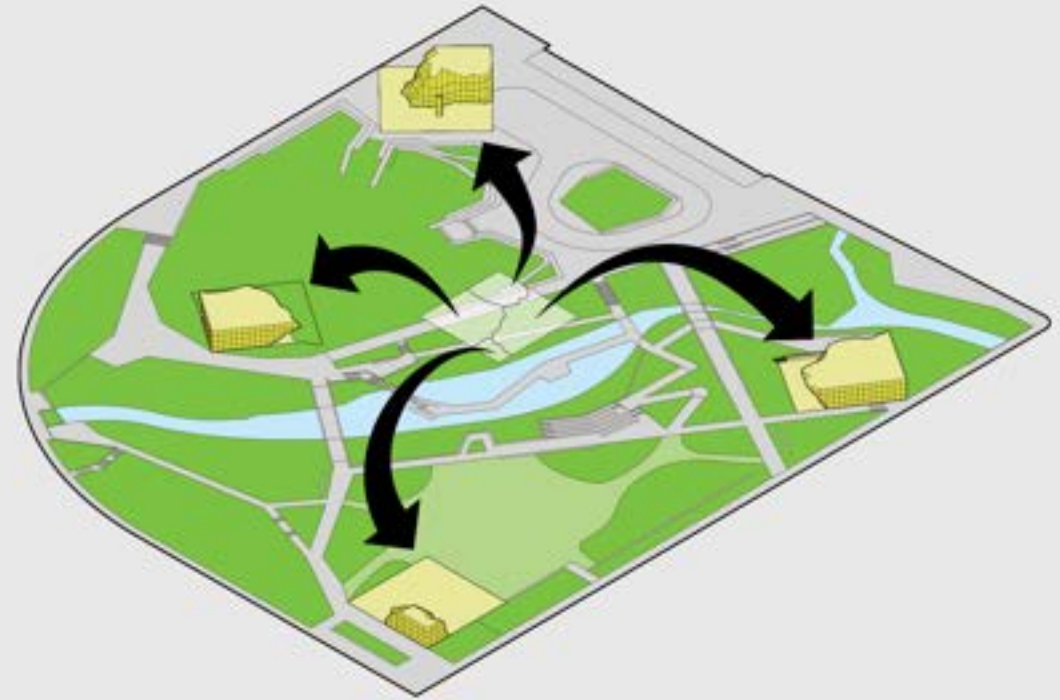
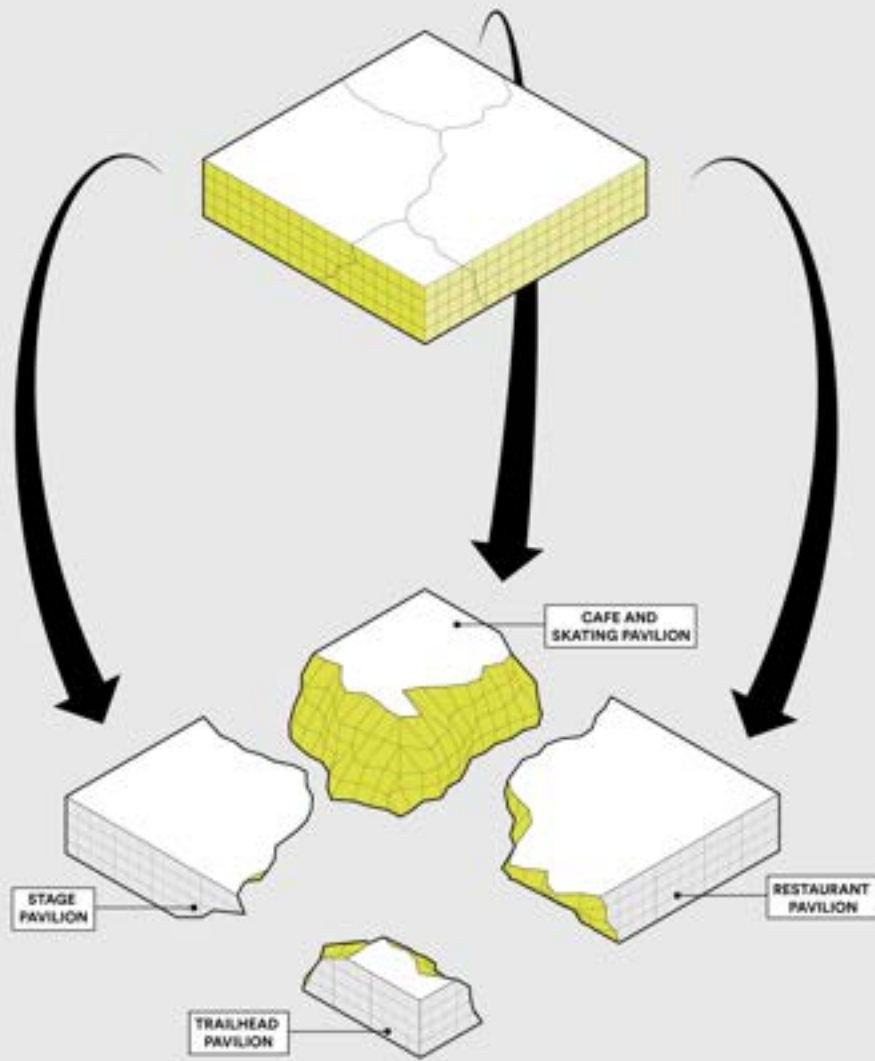
A COMMUNAL AMENITY

What was once a ditch is now an amenity worthy of engagement, crossing, and exploration. Cool Creek's new profile and resulting verdant riparian edge is now home to increased schools of fish, muskrats, and youthful curiosity.



A COMMUNAL AMENITY

Grand Junction's signature pavilions express the region's northern limestone extents, and serve as folly focal points and program rich content. At the edge of the performance lawn, pavilion meets riparian corridor - both working on behalf of Westfield's growing identity.



MAKING IDENTITY VISIBLE

The architectural expression of the pavilions is rooted in the Jeffersonian Grid, and the natural outcrops of limestone deposits. At Grand Junction, a cube of limestone is pulled apart to inform pavilion expressions and their distinct programming.



MAKING IDENTITY VISIBLE

Each of the pavilions is part of a larger implied square, reflecting the extents of the original cube written on the ground plane.



A PROGRAM RICH LANDSCAPE

Grand Junction Plaza features a cafe and skate rental pavilion, as well as engaged fountains for summer play and an ice loop for winter skating.



A PROGRAM RICH LANDSCAPE

The cafe pavilion is the first folly to be constructed, and is a beacon of light through the evening hours for social engagement. The contrast between the pixelated limestone facade and clear glazing establishes a signature language emblematic of the park.



STRATEGIC INFRASTRUCTURE WITH COMMUNAL PURPOSE

As the new central park for Westfield, Indiana, Grand Junction reflects what 21st century civic spaces should be, safeguarding social engagement through performative, integrated infrastructure and resilient landscapes.