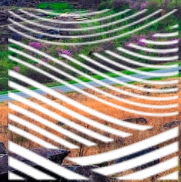


# 2025 ANNUAL MEMBERSHIP MEETING

SATURDAY, APRIL 12, 2025

WYNDHAM GETTYSBURG HOTEL  
& CONFERENCE CENTER  
GETTYSBURG, PA



ASLA  
PENNSYLVANIA  
DELAWARE





# Thank You, Central Section!

- **David Goldberg, ASLA,**  
Central Section Chair
- **Thomas Flynn, RLA, ASLA,**  
Chapter President
- **Joyce Gerhart, RLA, ASLA,**  
Central Section Member
- **Kelly Gutshall, RLA, ASLA,**  
Central Section Member
- **David Jordan, RLA, ASLA,**  
Treasurer
- **William Swiernik, RLA, ASLA,**  
Central Section Member
- **Randall Wright, RLA, ASLA,**  
Central Section Member

# 2025 Education/Planning Committee

- **Nicole Oeler, RLA, ASLA,**  
Secretary/Education Committee Chair
- **David Goldberg, ASLA,**  
Central Section Chair
- **Michael Campbell, RLA, ASLA,**  
Delaware Section Co-Chair
- **Ashley Eichlin, ASLA, LEED GA,**  
Eastern Section Co-Chair
- **Thomas Flynn, RLA, ASLA,**  
Chapter President
- **Joyce Gerhart, RLA, ASLA,**  
Central Section Member
- **Kelly Gutshall, RLA, ASLA,**  
Central Section Member
- **Daniel Harold, RLA, ASLA,**  
Vice President/Awards Committee Chair
- **David Jordan, RLA, ASLA,**  
Treasurer
- **Kimberly Shaner, RLA, ASLA, LEED AP, SITES AP,**  
Eastern Section Co-Chair
- **Stephanie Milewski, RLA, ASLA,**  
Immediate Past President
- **William Swiernik, RLA, ASLA,**  
Central Section Member
- **Randall Wright, RLA, ASLA,**  
Central Section Member

# 2025 Executive Committee

## OFFICERS

- **TRUSTEE:** Carl Kelemen, RLA, FASLA
- **PRESIDENT:** Thomas Flynn, RLA, ASLA
- **IMMEDIATE PAST PRESIDENT:**  
Stephanie Milewski, RLA, ASLA
- **VICE PRESIDENT:** Daniel Harold, RLA, ASLA
- **SECRETARY:**  
Nicole Oeler, RLA, ASLA, LEED AP
- **TREASURER:** David Jordan, RLA, ASLA

## MEMBERS AT LARGE

- David Bender, IDSA, Associate ASLA
- Donald Haas, RLA, ASLA, CBLP

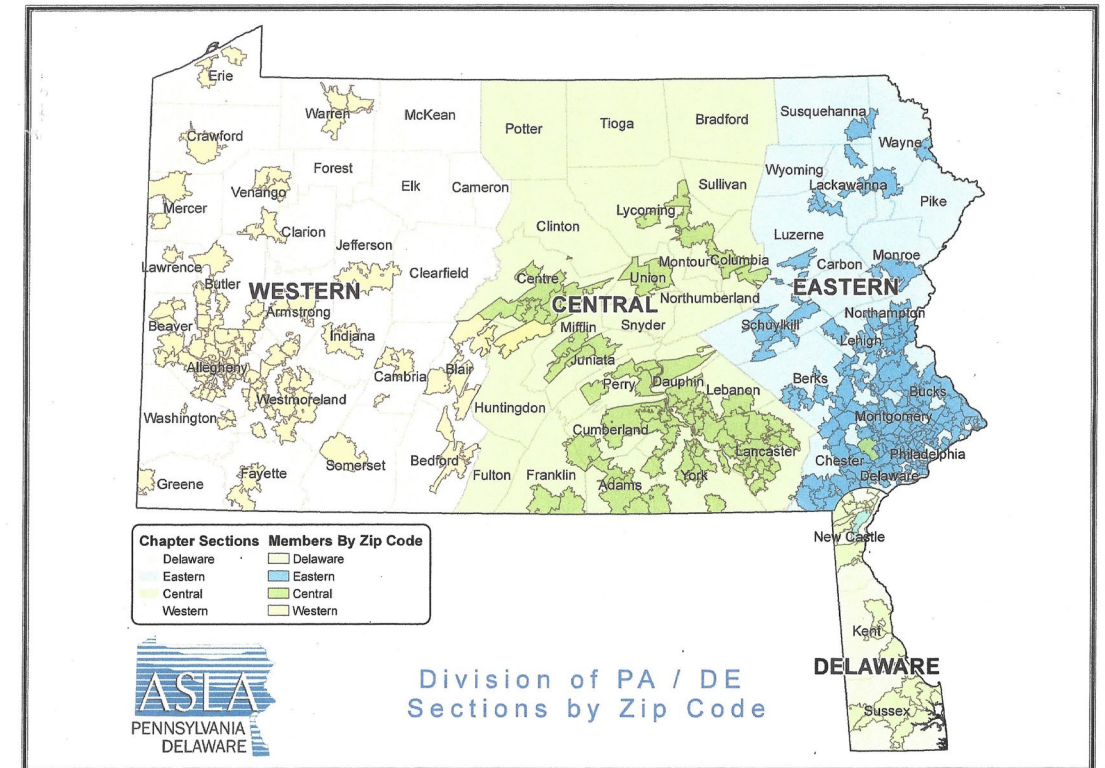
## OTHER REPS

- **EXECUTIVE DIRECTOR:** Cicely Elliott
- **CLIMATE ACTION REP:** Moya Sun, RLA, ASLA
- **HALS LIAISON:** Nancy Minich, HTR, RLA, MLA

# 2025 Executive Committee, cont.

## SECTION CHAIRS

- **CENTRAL CHAIR:** David Goldberg, ASLA
- **DELAWARE CO-CHAIR:** Michael Campbell, RLA, ASLA
- **DELAWARE CO-CHAIR:** Leigh Muldrow, Associate ASLA
- **EASTERN CO-CHAIR:** Ashley Eichlin, ASLA, LEED GA
- **EASTERN CO-CHAIR:** Kimberly Shaner, RLA, ASLA, LEED AP, SITES AP
- **WESTERN CHAIR:** Eva LaGard, Associate ASLA





# PA-DE Student Chapters & Presidents



**ASLA**  
PENNSYLVANIA  
DELAWARE

- ▶ Delaware Valley University  
**Marissa Vasquez**
- ▶ Jefferson University  
**Serma Basha**
- ▶ Penn State University  
**Calvin Lo**
- ▶ Temple University  
**Isabelle Rocca**
- ▶ University of Delaware  
**Bri Egan**
- ▶ University of Pennsylvania  
**Sierra Caley**

## GOLD SPONSORS



## SILVER SPONSOR



## BRONZE SPONSORS

DuMor Inc.  
Hanover Architectural  
Products  
John Rocco Sales  
The Western Group





# CHAPTER UPDATE



ASLA  
PENNSYLVANIA  
DELAWARE





# Chapter President

**Tom Flynn,  
RLA, ASLA**



## **My Roles:**

- ▶ Provide overall leadership of Executive Committee
- ▶ Appoint committee members
- ▶ Oversee administration of the Chapter
- ▶ Attend ASLA Chapter Presidents Council
- ▶ Ex Officio member of all committees

# Chapter President

**Tom Flynn,  
RLA, ASLA**



**ASLA**  
PENNSYLVANIA  
DELAWARE

## **My Goals:**

- ▶ Increase Chapter volunteer outreach
- ▶ Kick off a Chapter Climate Action Plan
- ▶ Roll out a new Chapter Strategic Plan
- ▶ Increase Chapter engagement with academic departments



# Committee Structure

## Executive Committee

**Voting Members:** Trustee, President, President-Elect / Immediate Past President, Vice President, Secretary, Treasurer, Section Chairs, Members-at-Large

**Non-voting Members:** Student Chapter Presidents, Additional Representatives

### COMMITTEE: Governance

CHAIR:  
Pres-Elect / Past Pres

### COMMITTEE: Member Services

CO-CHAIRS:  
Members-at-Large

### COMMITTEE: Education

CHAIR:  
Secretary

### COMMITTEE: Awards & Scholarships

CHAIR:  
Vice Pres

### Functions:

Audit  
Nom / Tellers  
Const / Bylaws  
Gov Affairs

### Functions:

Membership  
Comm / PR  
Univ Liaisons  
DEI

### Functions:

Prof Dev  
LARE  
Conference

### Functions:

Awards  
Scholarship  
Fellows

# Executive Director

**Cicely Elliott,**  
[celliot@wannerassoc.com](mailto:celliot@wannerassoc.com)

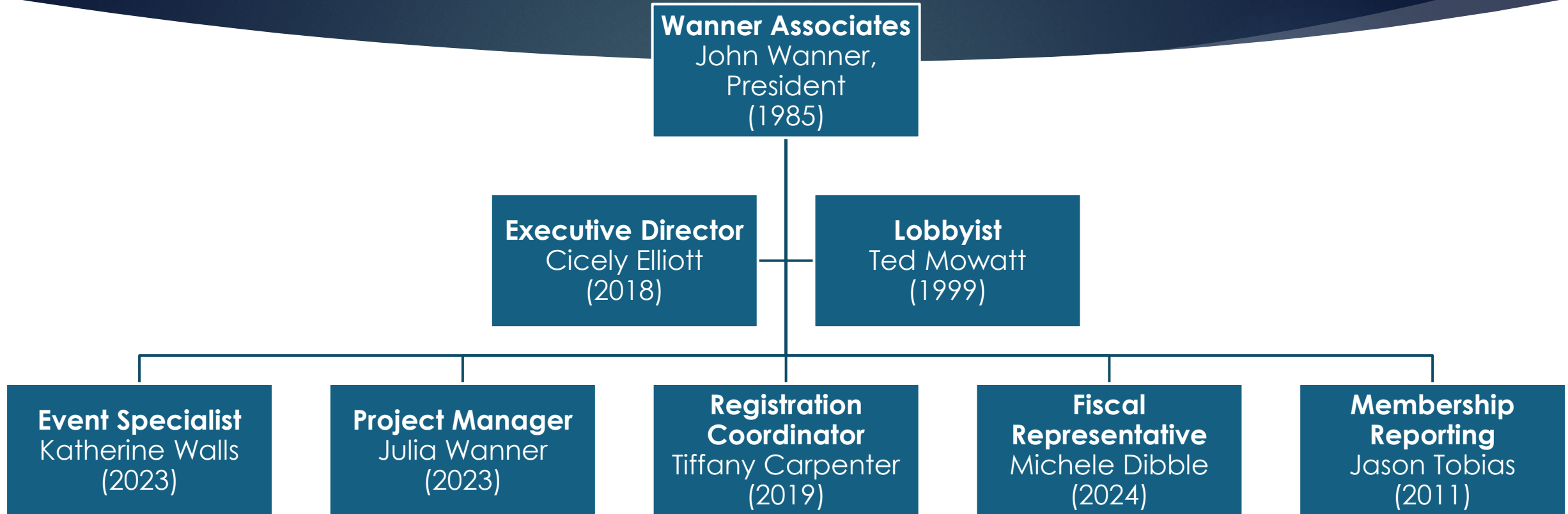


## My Roles:

- ▶ Partner with the Exec Comm and subcommittees
- ▶ Support the President & Exec Comm
- ▶ Help ID and develop leadership
- ▶ Ensure effective programming
- ▶ Liaison between Exec Comm and Wanner staff and LA Programs
- ▶ National ASLA coordination
- ▶ Keep the Chapter on task



# Wanner Associates Staff Team



# Current, Upcoming Staff Initiatives

## Current Staff Activities

- CONFERENCE PLANNING
- Weekly check-in meetings with TPF
- Executive Committee and Committee support and reporting
- Finance Committee coordination and reporting
- Statute of Repose Amicus Brief coordination
- Outreach to LA programs re: ASLA Student Honor & Merit Award coordination
- Strategic Plan coordination

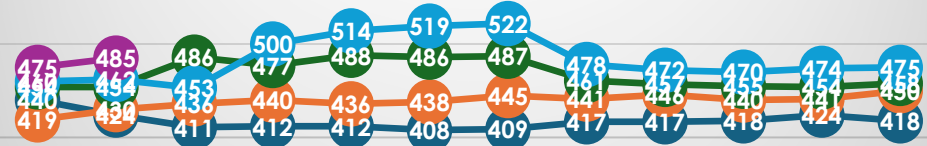
## Upcoming Staff Initiatives

- 2025 conference wrap up and 2026 conference planning
- RFP process for 2027 conference? (Western Section)
- 2025 Executive Committee Election coordination
- Fall 2025 PA Advocacy Day coordination and planning
- Strategic Plan coordination



# Chapter at a Glance: Membership

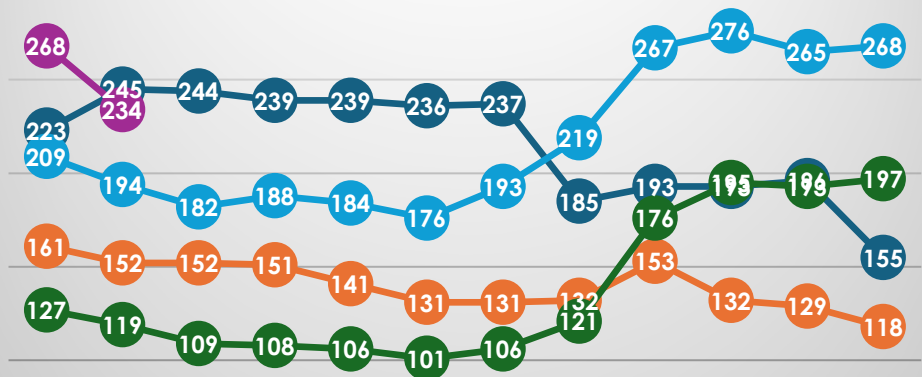
## Chapter Member Count



JAN FEB MAR APR MAY JUN JUL AUG SEPT OCT NOV DEC

2021 2022 2023 2024 2025

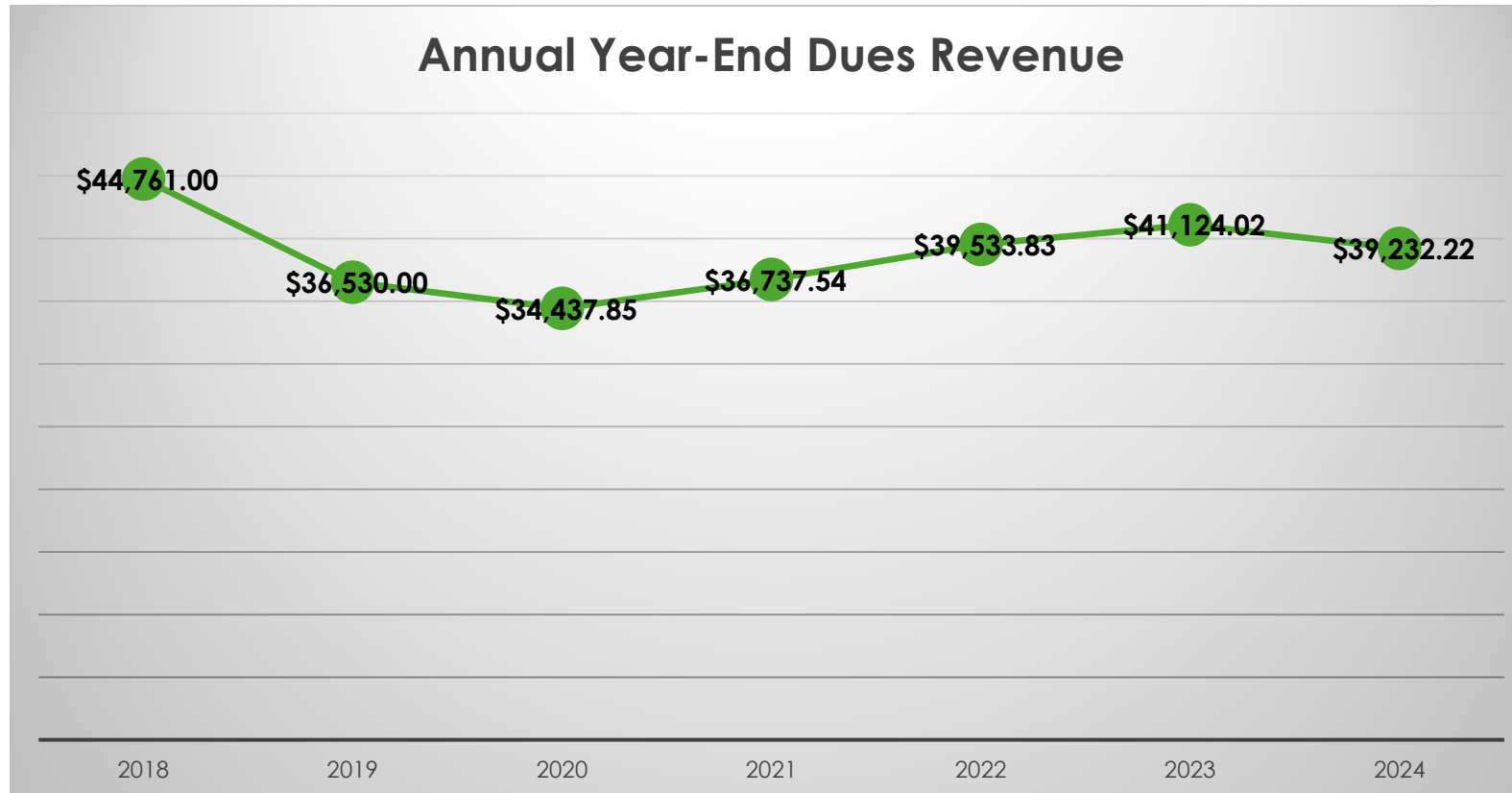
## Student Member Count



JAN FEB MAR APR MAY JUN JUL AUG SEPT OCT NOV DEC

2021 2022 2023 2024 2025

# Chapter at a Glance: Membership



## Notes:

2018: National ASLA Conference in Philadelphia

2020-2021: Pandemic

2019, 2021, 2023: LA License Renewal Years



# Chapter Treasurer

David Jordan,  
RLA, ASLA



## State of Chapter Financials:

- ▶ 2024 Year End (Budget): (\$628.42)
- ▶ **2024 Year End (Actual)\*: \$27,380.22**
- ▶ 2025 Year End (Budget): \$991.82
- ▶ **Current Reserves\*\*: \$194,483.04**
- ▶ **Years in Reserves\*\*\*: 0.96**

\*2024 year-end total includes much of the exhibitor/sponsor revenue for the 2025 conference.

\*\*Does not account for conference expenses at this point. This figure DOES include our Checking and Money Market account balances.

\*\*\*We aim to have 1-2 years in reserves; currently, we are very close and in a comfortable position.

# Financial Overview

	2023 (Budget)	2023 (Actuals)	2024 (Budget)	2024 (Actuals)	2025 (Budget)
REVENUE	\$140,662.50	<b>\$180,081.94</b>	\$190,200.00	<b>\$211,218.98</b>	\$188,500.00
EXPENSES	\$144,764.94	<b>\$175,943.30</b>	\$190,828.42	<b>\$183,838.76</b>	\$187,508.18
NET	(\$4,102.44)	<b>\$4,138.64</b>	(\$628.42)	<b>\$27,380.22</b>	\$991.82



# Chapter Trustee

Carl Kelemen,  
RLA, FASLA



## ► **Functions:**

- One of 49 Chapter Trustees on ASLA Board of Trustees
- Liaison between ASLA BOT and PA-DE ASLA Executive Committee

## ► **Recent ASLA Activities on Behalf of Members:**

- ASLA will be strategic and targeted about responding to executive orders and other administrative actions – allowing ASLA to be most impactful on issues critical to the profession.

# Chapter Trustee

Carl Kelemen,  
RLA, FASLA



ASLA  
PENNSYLVANIA  
DELAWARE

- ▶ ASLA will lead with intention – ensuring that ASLA's efforts are effective, disciplined, and aligned with our long-term goals.
- ▶ ASLA has conducted member surveys and found that the following issues are most important for ASLA members:
  - ▶ IRA and IIJA funding freeze which may jeopardize project funding
  - ▶ Federal Employee Reduction
  - ▶ Tariffs which may affect costs and availability of products
  - ▶ Paris Climate Accord Withdrawal
  - ▶ Federal Design Standards, and
  - ▶ DEI Directives
- ▶ Learn more at <https://www.asla.org/beliefs-and-actions.aspx>



# Governance Committee

PAST PRESIDENT

**Stephanie Milewski,**  
**RLA, ASLA**



**ASLA**

PENNSYLVANIA  
DELAWARE

## ► **Functions**

- Audits
- Nominations/Tellers
- Constitution & Bylaws
- Government Affairs

## ► **2024-2025 Accomplishments**

- DEP PCSM Manual Update
- Letters of Support: HB 969 (Limiting Light Pollution); HB 426 (Native Habitats at Commonwealth Facilities)
- Letter of Concern/Opposition: HCO 1132 (Watershed Stormwater Management Plan Exemption)
- Amicus Curiae Brief re: Statute of Repose (More on this later!)

# Governance Committee

PAST PRESIDENT

**Stephanie Milewski,**  
RLA, ASLA



**ASLA**  
PENNSYLVANIA  
DELAWARE

## ► Upcoming Tasks

- Coordinate **nominations**
- Updates to our **bylaws**
- **Monitor** legislative reports
- **Plan 2025 PA Advocacy Day** in Harrisburg (Fall 2025)

## ► Need Help With

- Call for **Nominating Committee** volunteers and Call for **Candidates**
- 2025 PA Advocacy Day in Harrisburg (Fall 2025)



# Member Services

MEMBERS AT LARGE

David Bender,  
IDSA, Assoc ASLA &  
Donald Haas,  
RLA, ASLA, CBLP



ASLA  
PENNSYLVANIA  
DELAWARE

## ► Functions

- Membership
- Communications/PR
- University Liaisons
- Diversity, Equity, & Inclusion

## ► 2024-2025 Accomplishments

- Onboarded new Member at Large positions
- Reviewed current MAL activities and strategized opportunities
- Connecting with student members

## ► Upcoming Tasks

- Work with Section Chairs to coordinate and promote more member events
- Strategize ways to better connect PA-DE ASLA professionals

## ► Need Help With

- Student mentors and student award judges
- Hosting and planning networking events and happy hours
- Feedback! Let us know what you need and what you are looking for

# Education Committee

SECRETARY

**Nicole Oeler,**  
**RLA, ASLA**



**ASLA**  
PENNSYLVANIA  
DELAWARE

## ► **Functions**

- Annual Conference
- Professional Development
- LARE Prep

## ► **2024-2025 Accomplishments**

- Planned 2025 Annual Conference in Gettysburg

## ► **Upcoming Tasks**

- Planning 2026 Annual Conference in Dewey Beach, Delaware

## ► **Need Help With**

- Finding exhibitors, sponsors, speakers, and tours/field sessions to make Delaware conference a success

# Awards & Scholarships

VICE PRESIDENT

**Daniel Harold,**  
**RLA, ASLA**



**ASLA**  
PENNSYLVANIA  
DELAWARE

## ► Functions

- Chapter Awards
- Student Travel Grants
- Fellows

## ► 2024-2025 Accomplishments

- Honored 25 Professional and Student projects with Chapter Awards
- Submitted 1 application for ASLA Fellow
- Sent 20+ LA students to the 2024 national conference

## ► Upcoming Tasks

- Re-evaluate the totality of the Awards Program
- Launch call for 2026 awards and Fellows nominations in the Fall

## ► Need Help With

- Awards Planning Committee Members – Big picture planning
- Awards Production Committee Members – Presentation, jury coordination, etc.
- Chapter FASLAs to mentor applicants through Fellows process



# Climate Action Representative

**Moya Sun,  
RLA, ASLA**



## ► **Functions**

- Serve as the PA-DE ASLA representative to the ASLA Climate Action & Biodiversity Committee
- Coordinate PA-DE ASLA climate-focused initiatives

## ► **2024-2025 Accomplishments**

- Joined national Climate Action & Biodiversity Network quarterly meetings as PA-DE rep
- Help PA-DE ASLA Executive Committee learn how other chapters approach Climate Action
- Support raising awareness of Climate Action at the chapter level (no specific events planned yet)

# Climate Action Representative

**Moya Sun,  
RLA, ASLA**



**ASLA**  
PENNSYLVANIA  
DELAWARE

## ► Upcoming Tasks

- Solidify chapter Climate Action strategic planning and actionable items

## ► Need Help With

- Building the PA-DE ASLA Chapter Climate Action network/volunteer group
- Building connection with adjacent chapters (Ref Great Lakes network)
- Further recognize projects with design excellence in sustainable approaches and carbon analysis



# MEMBER ENGAGEMENT



ASLA  
PENNSYLVANIA  
DELAWARE





# 2025 Executive Committee Election

## ► Positions on the Ballot:

**Trustee** (3-Year Term)

**President-Elect** (1-Year Term, Then Pres)

**Vice President** (2-Year Term)

**Secretary** (2-Year Term)

**Treasurer** (2-Year Term)

# 2025-2030 PA-DE ASLA Strategic Plan

## ► Four Focus Areas:

- **Community**: Build a welcoming and inclusive community that provides a place for members, partners, and supporters to connect, learn, and grow.
- **Connection**: Enable change through collaboration and effective partnerships.
- **Voice**: Provide a platform to elevate the expertise and collective impact of our members.
- **Operations**: Provide transparent and efficient use of Chapter resources and management.

# FYI: PA-DE ASLA Protecting LAs

## ▶ Statute of Repose Amicus Curiae (Friend of the Court) Brief

- ▶ Case being heard at PA Supreme Court challenges the validity of the Statute of Repose and the definition of “lawfully performed”
- ▶ Essentially, the plaintiff’s argument was that the wording in the statute required all elements of the work performed to be 100% within the requirements of all federal, state, and local code and requirements. **If the plaintiff’s arguments move forward, it would eviscerate the protections offered to Landscape Architects (and other design/construction professionals) under the statute that states after 12 years no lawsuit can move forward for failure of an improvement to real property.**



# FYI: PA-DE ASLA Protecting LAs

- ▶ Negating the Statute of Repose would require Landscape Architects, Engineers, and Architects to maintain professional insurance even through retirement, a type of insurance that is not offered by insurance firms. No licensed professional would want to use their seal as it would put them on the hook indefinitely.
- ▶ The brief argued that the “lawfully performed” portion of the statute means that the person was authorized to do the work, and had the appropriate license to perform the work, not that the final work product is 100% within code.

# FYI: PA-DE ASLA Protecting LAs

## ► Statute of Repose Amicus Curiae (Friend of the Court) Brief

- Amicus Brief filed in March 2025
- Cosigners include: AIA, AIA-PA, ACEC, ACEC-PA, DVASE, SEAP, PSPE, PSLS, and PA-DE ASLA (Architects, Engineers/Companies, Land Surveyors, Landscape Architects)
- **Read the full brief and learn more at [www.padeasla.org](http://www.padeasla.org) under “In the News Today”**
- We are committed to staying “in the know” and will communicate updates and calls to action as they are available

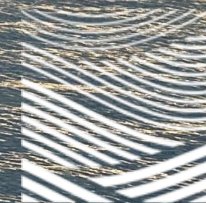


# SAVE THE DATE!

## 2026 PA-DE ASLA Conference on Landscape Architecture

April 23-25, 2026

Hyatt Place Dewey Beach  
Dewey Beach, Delaware



ASLA  
PENNSYLVANIA  
DELAWARE

Photo credit: Cicely Elliott



# QUESTIONS?



ASLA  
PENNSYLVANIA  
DELAWARE

